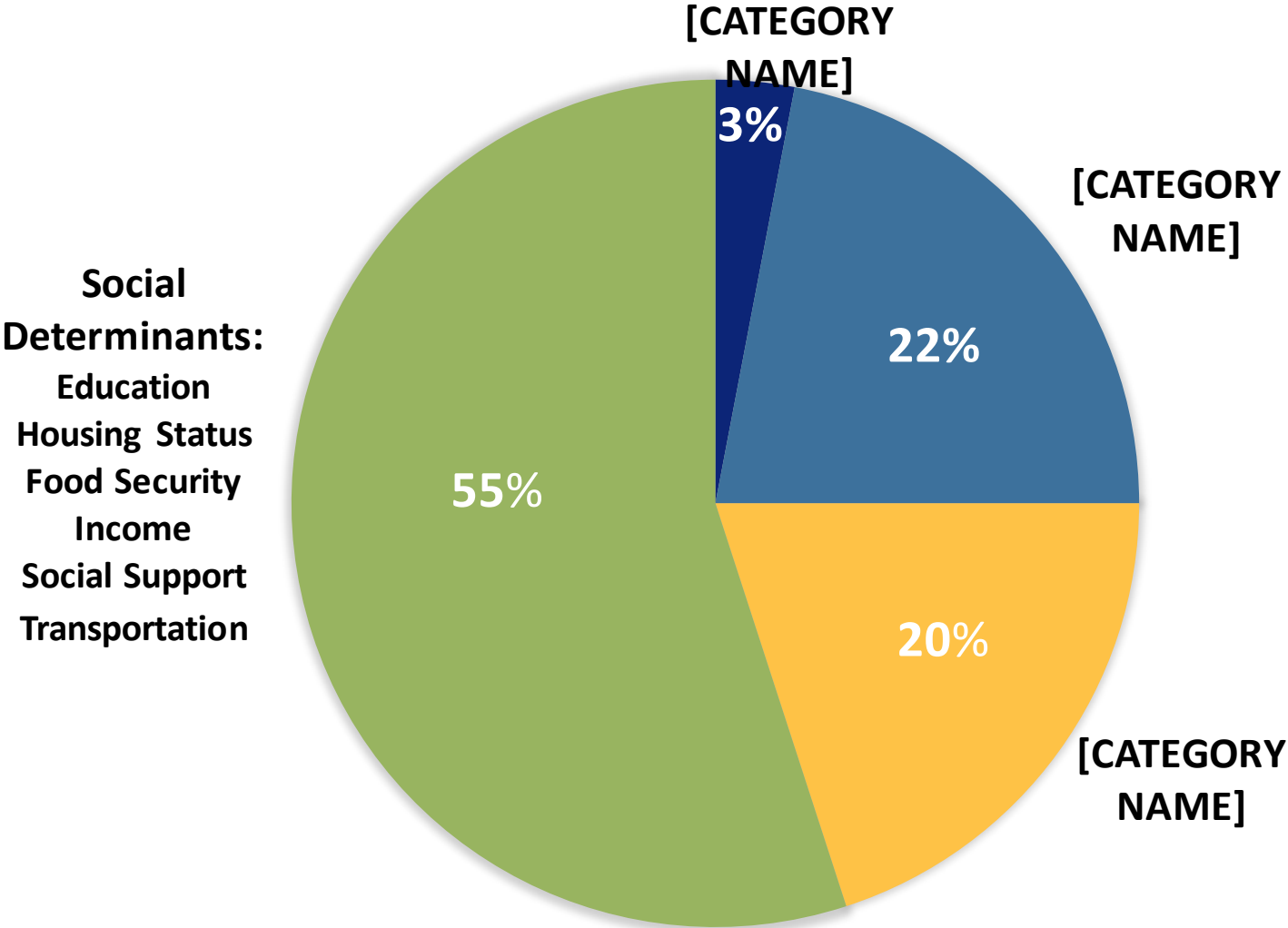
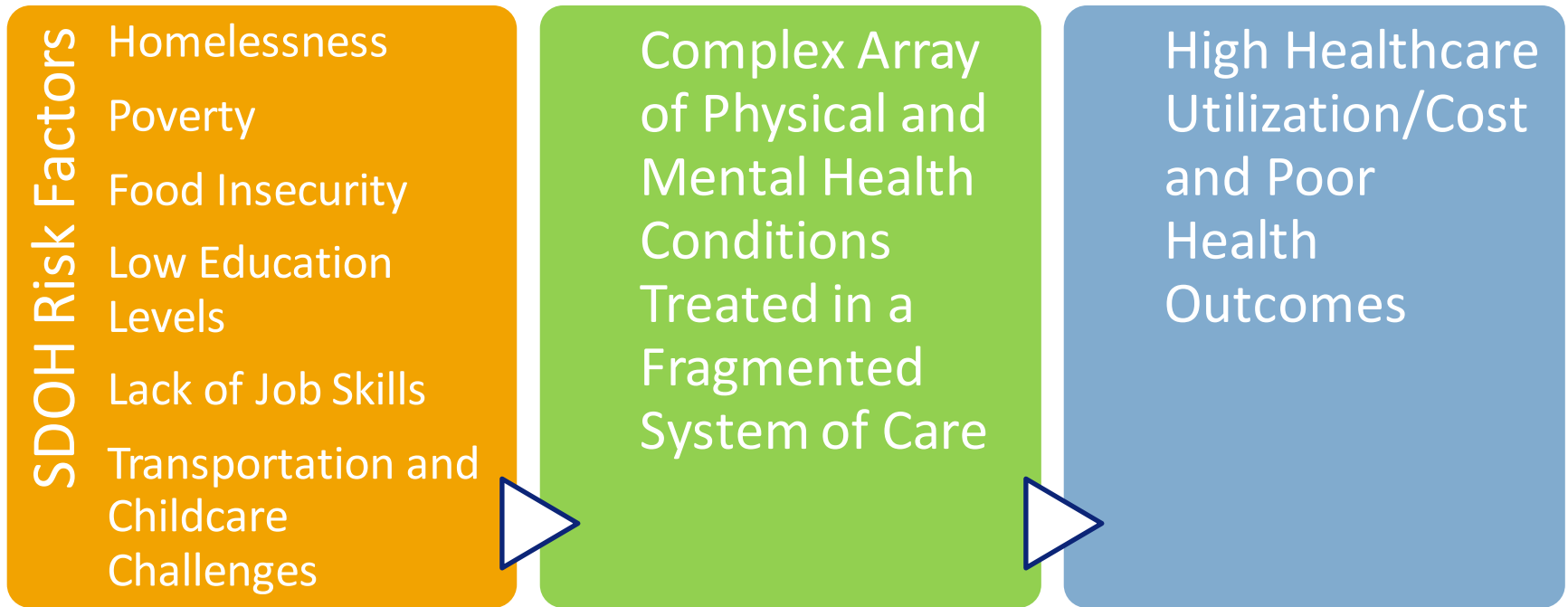


# Estimates of Effect of Determinants of Health on Health Outcomes



# A Fragmented System of Care Compounds Problems

---



# Goal: Break Down Silos and Collaborate for Seamless, Holistic Care

---

## Increase bi-directional data and information sharing to support quality care coordination

- . Patient assessments (HNS, CHAAT, ANSA)
- . Health Plan Care Plans and Services (e.g., IICP)
- . MRO Integrated Care Plan and Service Package
- . MRO services performed; MRO service gaps
- . Care gaps that need to be addressed

## Coordinate and Communicate

- . Facilitate connection and outreach - MOUs
- . Timely follow-up care after hospitalization

## Innovate Together!!

- . Enhanced care management pilots
- . Value-based arrangements
- . Housing and Supportive Services Pilots
- . Re-Entry Programs
- . Etc.!



# Anthem Resources to Address SDOH

## Community Health Worker (CHW) and Locate & Engage Teams

- . Feet-on-the-street programs with CHWs, social workers and peer recovery specialists
- . CHWs are deployed statewide; L&E is currently active in Marion, Lake, Vanderburgh, Allen and surrounding counties
- . Person-centered, collaborative approach employing recovery concepts and supports, including harm reduction
- . Focused on finding hard to reach members, addressing SDOH and other barriers – *we want to help you avoid “no shows” and re-engage disengaged patients*



## Variety of Value-Added Benefits addressing SDOH\*

- . **Transportation** – rides to medical and mental health appointments
- . **Communication** - Cellphone with 350 minutes each month, unlimited texting, plus a one-time bonus of 200 minutes
- . **Education** - GED Assistance to cover the cost of the HSE exam
- . **Social Support** - Boys & Girls Club membership
- . **Medication Side Effects** - Weight management tools and membership vouchers
- . \* Subject to eligibility