



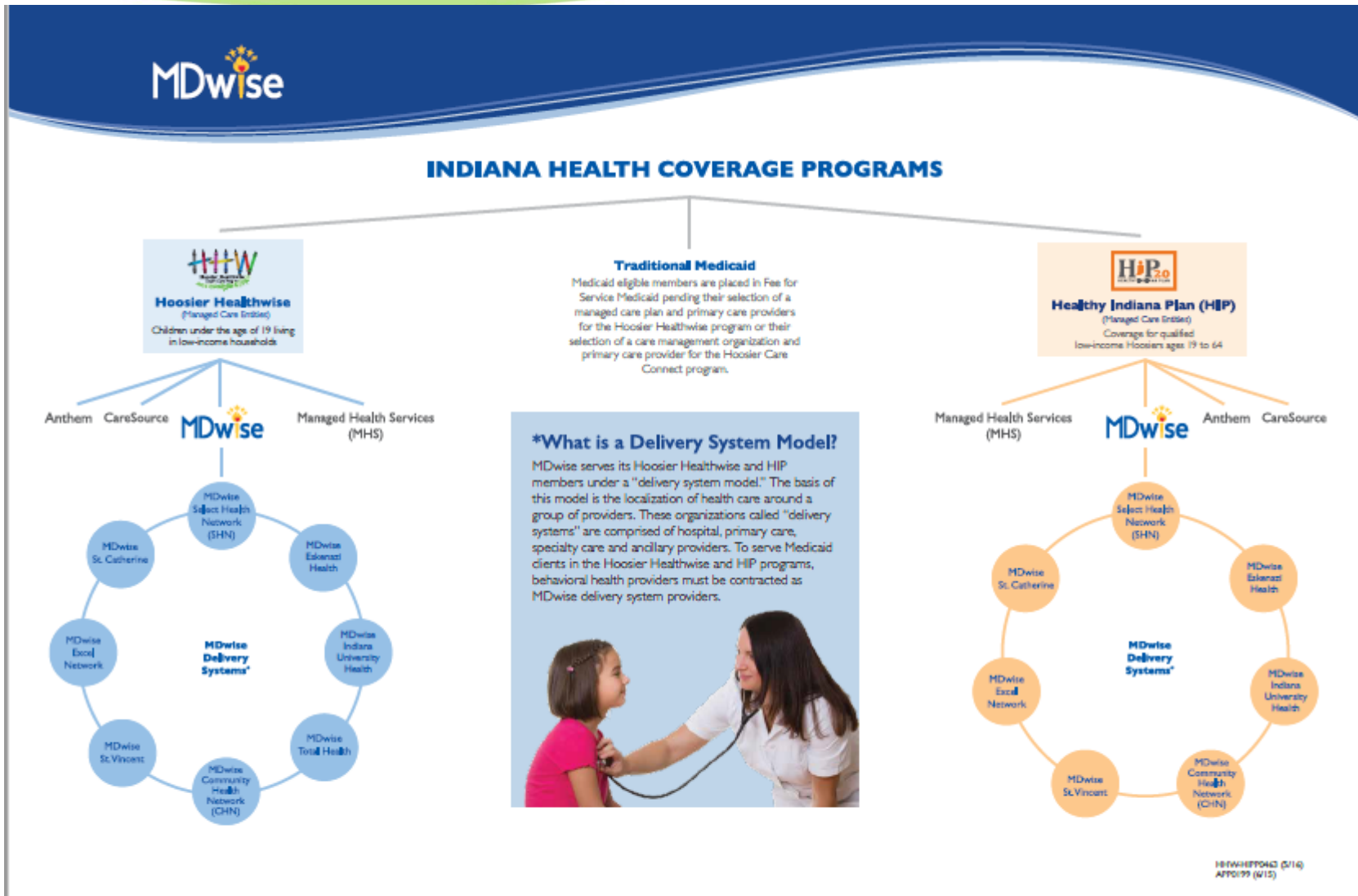
MDwise

Increasing Collaboration
Around Social Determinants of
Health

Exclusively serving Indiana families since 1994.



MDwise Overview – Delivery System Model



Medically Frail, cont.

- FSSA requires the MCEs to use Milliman's Medical Underwriting Guidelines for the purpose of evaluating frailty.
- Members are considered frail if they meet the following debit point thresholds:
 - 150 debit points for indicated medical conditions
 - 75 debit points for indicated behavioral health conditions
 - 75 debit points for indicated substance abuse conditions
 - 150 debit points in total across all categories
- Final determination made by staff RN's.

Medically Frail Overview

- The program is designed to provide extra coverage for HIP members who meet one of the following criteria:
 - A disabling mental disorder;
 - A chronic substance abuse disorder;
 - A serious and complex medical condition(s);
 - A physical, intellectual, or developmental disability that significantly impairs the individuals' ability to perform one or more activities of daily living; or
 - A disability determination based on Social Security Administration criteria.
- Members can self referral or referred by the CMHC.

Medically Frail Referral Process

- MDwise staff request records from providers to determine frailty status
- MDwise Medically Frail fax/phone number 844-407-6455 or 317-715-4215.
- We are available to participate in clinical staffing's to review members and/or develop the most efficient referral process for our members.

If you remember nothing else, these things will help you:

- Medically frail status is only for fully eligible HIP members.
- Medically frail confirmation puts members on State Plan and that means extra benefits (transportation, dental, MRO).

Influencing members facing social determinants

- Transition Home Visits - helping bridge the gap for members with immediate needs after hospitalization.
- Implementing the new Federal Lifeline Assistance Program
 - Free Android Smart phone for those that qualify or the ability to use their own phone.
- Homelessness- MDwise is involved with coordinating services and projects with several other community groups
 - IN Data Integration Project
 - CHIP Coalition for Homelessness Intervention and Prevention
 - CSH Corporation for Supportive Housing