

How do CMHCs benefit their communities?

Indiana's Community Mental Health Centers (CMHCs) provide comprehensive mental health care to persons of all ages who suffer from mental illness or substance use disorders.

- The 24 CMHCs focus on serving economically disadvantaged Hoosiers and those who typically encounter difficulties accessing care.
- The services CMHCs provide to their communities include: inpatient and outpatient treatment, crisis services, services for children and adolescents, elderly people, substance use services, residential services, peer-led services and more.
- CMHCs provide life-improving, critical mental health services to Hoosiers who otherwise might never receive care, including the economically disadvantaged, persons involved in the criminal justice system, and persons who are experiencing homelessness.



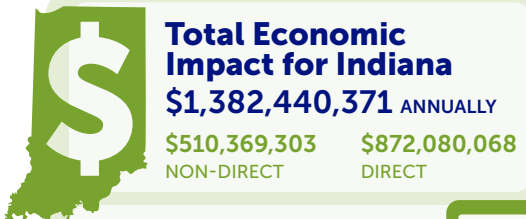
Access to high quality, comprehensive behavioral health care

Development of behavioral health workforce



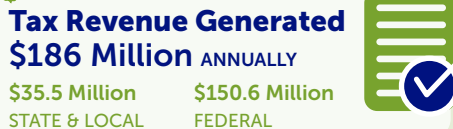
Addressing the behavioral health care needs of underserved communities

Innovative service delivery approaches



CMHCs have a positive impact on Indiana's economy.

- The overall economic footprint of CMHCs statewide is nearly **\$1.4 billion**
- Every \$1.00 invested by CMHCs generates another \$0.59 in additional economic activity.
- CMHCs directly employ **11,829 Hoosiers**, and indirectly support the jobs of an additional 3,511 Hoosiers through the supply chain, and via income generated by the CMHCs.
- CMHCs help improve the state's **mental healthcare workforce** by providing internships to graduate students to learn skills needed to work in a community mental health environment.

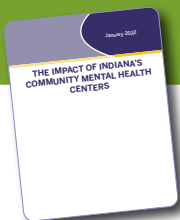


How can you support Indiana CMHCs?

CMHCs face many challenges, the biggest of which are acquiring and retaining a quality workforce, lack of adequate funding, and administrative burdens.

The following measures would assist CMHCs to provide Hoosiers with more effective and timely services ...

- Continue Telehealth supports, alongside face-to-face services, as during the first year of the Covid-19 pandemic.
- Continue and expand the **Certified Community Behavioral Health Center (CCBHC)** grantee program; implement **Prospective Payment System** rate methodology.
- Increase Medicaid reimbursement rates to reflect the true cost of services.
- Provide incentives to work at CMHCs, such as student loan repayment or tuition reimbursement.
- Improve the licensure process by removing barriers to get a license more quickly.
- Reduce the administrative burden to CMHC staff - by streamlining processes and reducing paperwork.
- Allow reimbursement of support services for consumers, such as transportation to and from the CMHC.
- Improve Hoosiers' mental health literacy to help them recognize, manage and prevent mental health and substance use disorders.



Text adapted from *The Impact Of Indiana's Community Mental Health Centers* by the Center For Health Policy.
[View /download the full report here](#)

Indiana Council of Community Health Centers,
101 West Ohio Street, Suite 610 Indianapolis, IN 46204
(317) 684-3684
indianacouncil.org