

News, programs and training opportunities / Distributed to all members



Stepping into a bright new future



This month we are delighted to welcome Oaklawn to our Member Spotlight section.

Oaklawn provides comprehensive mental health and addiction services in St. Joseph and Elkhart counties in northern Indiana, serving 25,000 children, adolescents and adults each year through direct services provided on their four campuses, as well as through partnerships that extend their reach in the community...

Read more... See page 6-9

Also this issue:



Pages 13-16

State & Federal updates



Pages 18-19

Latest events



To our wonderful members:

Fall is in the air as I write this which means it is National Recovery and National Suicide Prevention Month. I am thankful for each of you who are in recovery and those of you who help so many find recovery. I am also thankful for the suicide prevention efforts that many of you make each day in your work.

Since we saw you at our member meeting in July many things have taken place for the council that I wanted to share with all of you –

- The council added its 5th staff member, **Hannah Appah**, Data Warehouse Project Manager. Hannah will be working with the Data Analytics committee on developing a state data warehouse. To see more about Hannah and her role with us go to page 19.
- We also started a new **marketing committee** with most of the CMHCS represented. For more information on this committee please see page 17.
- The council also started a **Residential Treatment Subcommittee** to help in learning more about the services each of our members provide to assist in referral and relationship development.
- The council's **Human Resource Committee** is working with the DMHA Workforce Director on developing an early work force pipeline. This work group meets monthly. If you are interested in this workgroup, please reach out to **Lee Ann Jordan** so she can add you to our workgroup list.
- Hot off the press is the **Group Home Capital** that the council is administering and finalizing the grants for several members. *A total of 14 million in capital that we advocated for our members!*
- We are trying to encourage members to use the member only list serve section of our webpage. You can see instructions on how to do this on page 20-21.

The council is providing education on the council, its members and our policy focus areas to several groups this fall:

- Indiana County Commissioner Association Board meeting
- IPHCA/Council Summit
- **NAMI Conference**
- **IPHCA Conference**
- **Rural Justice and Public Health Professional Summit**
- **National Council Hill Day at Home**
- The Council's Hill Day – Federal legislator of the year award

WELCOME

We also enjoyed visiting with our members at the **Family Health Center** (Formerly Good Samaritan) in Vincennes and being a part of the new crisis center opening at **Life Springs Health** in Jeffersonville and groundbreaking at **Oaklawn** in South Bend. As this is getting finalized, I will be presenting to **Meridian Health's** Board and welcoming their new CEO Seth Warren. Also, a warm welcome to **Aspire's** new CEO Antony Sheehan, Family Health Center's CEO Jennifer Emmons, **Park Center's** interim CEO Dr. Ahsan Mahmood, and Meridian's CEO Seth Warren.

Lastly, we were honored to be the guest of the **LT Governor** at her welcome reception for **Congressman Patrick Kennedy** and a VIP Session with **DR. Jerome Adams**, former US Surgeon General and now Executive Director of **Health Equity Initiatives at Purdue** and **Dr. Gupta** who serves as the Director of the **White House Office of National Drug Control Policy** (ONDCP).

Fall will not be complete without seeing all of you at our **Fall Member Conference October 4-6 in Bloomington, Indiana**. For more information on attending, exhibiting and sponsorship opportunities [click here](#). There are many great speakers on Thursday.

On Friday we will be reviewing the **strategic plan** that the council's board updated at our retreat in August, discussing our public policy platform for this upcoming session, strategically planning for CCBHC, and voting on new board members who will continue to assist the council in achieving its mission.

Our theme is **We FALL for our Members**. We look forward to seeing you all amongst the beautiful autumn Bloomington foliage.

In gratitude- Zoe

Zoe Frantz

President, CEO

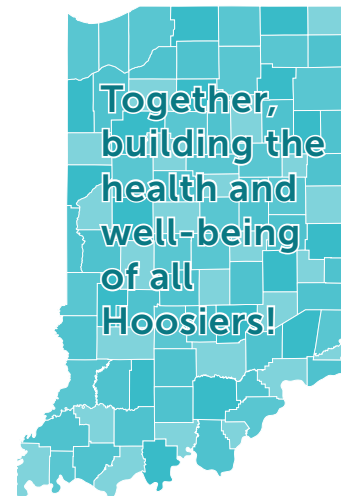
zfrantz@indianacouncil.org



CONTENTS

September / October 2023

Letter from Zoe	2-3
About Indiana Council	4
September dates	5
Member Spotlight <i>with Oaklawn</i>	6-11
Council Updates	12
State Updates	13
Federal Updates	14-16
Committee Updates	17
Recent events	18-19
Message Boards	20-21
Our Providers Map	22-23
<i>Indiana Council member providers - serving all 92 Indiana counties</i>	
Upcoming dates for your calendar	24



© 2023 Indiana Council of
Community Mental Health Centers

indianacouncil.org

[LinkedIn](#)

[Twitter](#)

[Facebook](#)



Design by

John Fordham Design

The Indiana Council of Community Mental Health Centers

represents the collective interests of all community mental health centers (CMHCs) currently certified and accredited to provide community-based behavioral health services across all ninety-two counties in Indiana.

CMHCs in Indiana served over 300,000 behavioral health consumers in 2022. CMHCs provide services primarily to those suffering from severe behavioral health and substance abuse conditions which further reduce additional costs to society by directing coordinated care to our most vulnerable citizens.

Click the image below to view / download our flyer on the benefits provided to our communities by our network of CMHCs.

INDIANA COUNCIL How do CMHCs benefit their communities?

Indiana's Community Mental Health Centers (CMHCs) provide comprehensive mental health care to persons of all ages who suffer from mental illness or substance use disorders.

- The 24 CMHCs focus on serving economically disadvantaged Hoosiers and those who typically encounter difficulties accessing care.
- The services CMHCs provide to their communities include: inpatient and outpatient treatment, crisis services, services for children and adolescents, elderly people, substance use services, residential services, peer-led services and more.
- CMHCs provide life-improving, critical mental health services to Hoosiers who otherwise might never receive care, including the economically disadvantaged, persons involved in the criminal justice system, and persons who are experiencing homelessness.

CMHCs have a positive impact on Indiana's economy.

- The overall economic footprint of CMHCs statewide is nearly **\$1.4 billion**
- CMHCs directly employ **11,829** Hoosiers, and indirectly support the jobs of an additional 3,511 Hoosiers through the supply chain, and via income generated by the CMHCs.
- Every \$1.00 invested by CMHCs generates another \$0.59 in additional economic activity.
- CMHCs help improve the state's mental healthcare workforce by providing internships to graduate students to learn skills needed to work in a community mental health environment.

Total Economic Impact for Indiana
\$1,382,440,371 ANNUALLY
\$510,369,303 NON-DIRECT | \$872,080,068 DIRECT

Tax Revenue Generated
\$186 Million ANNUALLY
\$35.5 Million STATE & LOCAL | \$150.6 Million FEDERAL

Employment
15,3040 TOTAL JOBS
3,511 NON-DIRECT | 11,829 DIRECT

How can you support Indiana CMHCs?

CMHCs face many challenges, the biggest of which are acquiring and retaining a quality workforce, lack of adequate funding, and administrative burdens. The following measures would assist CMHCs to provide Hoosiers with more effective and timely services...

- Continue Telehealth supports, alongside face-to-face services, as during the first year of the Covid-19 pandemic.
- Continue and expand the Certified Community Behavioral Health Center (CCBHC) grantee program; implement Prospective Payment System rate methodology.
- Increase Medicaid reimbursement rates to reflect the true cost of services.
- Provide incentives to work at CMHCs, such as student loan repayment or tuition reimbursement.
- Improve the licensure process by removing barriers to get a license more quickly.
- Reduce the administrative burden to CMHC staff by streamlining processes and reducing paperwork.
- Allow reimbursement of support services for consumers, such as transportation to and from the CMHC.
- Improve Hoosiers' mental health literacy to help them recognize, manage and prevent mental health and substance use disorders.

Text adapted from The Impact Of Indiana's Community Mental Health Centers by the Center For Health Policy. View / download the full report here

Indiana Council of Community Health Centers, 101 West Ohio Street, Suite 610 Indianapolis, IN 46204 (317) 684-3584 indianacouncil.org

KEY CONTACTS:

Zoe Frantz

President, CEO

812-298-4533

zfrantz@indianacouncil.org

Denise Wade

Chief Administration Officer

317-684-3684

dwade@indianacouncil.org

Lee Ann Jordan

Director of Communication & Membership

317-650-4972

ljordan@indianacouncil.org

Andy Zellers

Grant Administrator &

Policy Research Analyst

812-204-1789

azellers@indianacouncil.org

Kelli Waggoner

KWK Management Group

317-213-3876

Grant Waggoner

KWK Management Group

317-430-9860

Lou Belch

The Corydon Group

317-213-3884

Sydney Moulton

The Corydon Group

317-752-5166

or scan this QR code:



SEPTEMBER DATES TO NOTE:

September is National Suicide Prevention Month

Suicide is a major public health concern and a leading cause of death in the U.S. Help the **National Institute of Mental Health (NIMH)** raise awareness by sharing resources that help others recognize the warning signs for suicide and know how to get help.

Everyone can play a role in preventing suicide! During National Suicide Prevention Awareness Month in September, help the National Institute of Mental Health (NIMH) raise awareness by **sharing resources** that help others recognize the warning signs for suicide and learn how to get help.

If you're in crisis, there are options available to help you cope. You can call or text the 988 Suicide & Crisis Lifeline at any time to connect with a trained crisis counselor.

For confidential support available 24/7 for everyone in the U.S., call or text 988 or chat at 988lifeline.org, or visit [NIMH's Suicide Prevention page](https://www.nimh.nih.gov/suicideprevention)



5 Action Steps for Helping Someone in Emotional Pain

- ASK**
"Are you thinking about killing yourself?"
- KEEP THEM SAFE**
Reduce access to lethal items or places.
- BE THERE**
Listen carefully and acknowledge their feelings.
- HELP THEM CONNECT**
Call or text the 988 Suicide & Crisis Lifeline number (988).
- STAY CONNECTED**
Follow up and stay in touch after a crisis.

NIMH National Institute of Mental Health nimh.nih.gov/suicideprevention



American Foundation for Suicide Prevention



September is National Recovery Month

Starting in 1989, **National Recovery Month** is observed every September and aims to raise awareness and promote new evidence-based treatment and recovery models.

More information on Recovery Month, including a **social media toolkit** can be found on the Substance Abuse and Mental Health Services Administration (SAMHSA) [website](#).



Elkhart campus (entrance)

Our origins are rooted in the service of conscientious objectors who were sent to work at state mental hospitals during World War II. Thousands of young Anabaptists conducted alternative service in institutions where they witnessed deplorable and inhumane conditions. Together, they not only brought national attention to the plight of the mentally ill, but they also resolved to find a better path forward. After the war, leaders in the Mennonite Central Committee worked to open their own mental health centers, and Oaklawn is one of six Mennonite-founded mental health centers across the U.S. Today, Oaklawn maintains its affiliation with the **Mennonite Health Services Association** and our work continues to be shaped by Anabaptist values such as compassion and human dignity.

Since then, Oaklawn has grown to provide comprehensive mental health and addiction services in St. Joseph and Elkhart counties in northern Indiana. **We serve 25,000 children, adolescents and adults each year** through direct services provided on our four campuses, as well as through community partnerships that extend our reach in the community. We provide outpatient services at our campuses in Elkhart, Goshen and South Bend, as well as operate a 16-bed inpatient psychiatric hospital at our Goshen location and a residential facility for youth in Mishawaka that serves about 60 youth, ages 12-18. Our team of 800-plus employees include psychiatrists, nurse practitioners, psychologists, therapists, care facilitators, skills trainers, peer support professionals, mental health technicians and many support professionals.

While we honor our history, Oaklawn is continually keeping an eye to the future. We're eagerly making the transition to become a **Certified Community Behavioral Health Clinic (CCBHC)**, forging new partnerships to expand mental health and substance use treatment and adapting to the evolving needs of our community.



OAKLAWN

Oaklawn has been a leader in providing compassionate care since we opened as a day hospital in Elkhart, Indiana, in 1963 – though our founding was decades in the making.



Oaklawn opened its first location in Elkhart on February 11, 1963.



Goshen campus (entrance)



South Bend campus

OAKLAWN

Open Access

In May of 2022, Oaklawn marked one of the most significant changes in our 60-year history when we moved to an Open Access model.

Now, instead of scheduling first appointments weeks (or sometimes months) in advance, clients can walk-in and have an initial assessment with a master's-level therapist same day.

This change required a significant shift in the way we do our work. We restructured our Access Center and created new roles to help clients navigate the process. We introduced a new initial assessment that streamlined our intakes. We cross-trained our clinical teams, so therapists who specialized in child & adolescent, adult or substance use treatment were equipped to assess all populations on the full range of mental health and substance use disorders.

These changes have led to significant improvements in client care and eliminated no-shows and waiting lists. In the first year of Open Access, we completed 6,500 assessments, a 30 percent increase from the previous year. Additionally, the number of people who kept their second appointment has nearly doubled, as we respond in real time when clients are ready for help. In addition to the benefit to clients, therapists report growth in their clinical skills and say they appreciate the ability to offer immediate hope.

Enhanced crisis care

We continue to make strides in providing better care to people in crisis, through enhanced 24/7 phone support, a mobile crisis response team and planned crisis stabilization centers.

Our **mobile crisis response team** launched in the fall of 2021 and has grown to operate 8 a.m. - 8 p.m. Monday-Friday, with plans to expand to weekend hours this fall, and eventually, 24/7. The team consists of therapists, case managers and peer support professionals. They field calls from people in crisis, most of which are resolved over the phone. When indicated, the team will respond on location in St. Joseph County, with plans to expand to Elkhart County next year. Oaklawn also has a formal partnership with St. Joseph County 911 and will respond with or in lieu of police as appropriate.

Oaklawn is working in both Elkhart and St. Joseph counties to start **24/7 crisis stabilization centers**. The centers will provide a short-term place for people experiencing a mental health or substance use crisis to be quickly assessed, de-escalated, stabilized and linked to appropriate treatment. The centers will operate on a "living room" model, with recliners instead of beds, and be staffed by mental health professionals including psychiatrists, nurses, therapists and peer support professionals.



Open Access team: The Access Center staff at our Goshen campus help new clients navigate the intake process.



The crisis center in St. Joseph County is possible thanks to extensive community partnership, including the City of South Bend, Beacon Health and Faith in Indiana.



OAKLAWN

MEMBER SPOTLIGHT

Crisis centers planned for St. Joseph and Elkhart counties will offer a safe place for people in crisis to be quickly assessed, de-escalated, stabilized and connected to the appropriate level of care. The center in St. Joseph County is under renovation and expected to open this winter. The center in Elkhart County will begin renovation this fall and open in early- to mid-2024.



In **St. Joseph County**, the crisis center will be housed in a renovated space at a close community partner, **Beacon Health**, who provides inpatient psychiatric hospitalization for the county. The space is currently under renovation, which is expected to continue through the fall, with a planned opening this winter. The project is the result of strong community partnerships including with the **City of South Bend**, which contributed \$2.7 million to the effort. The St. Joseph County Council also pledged a \$600,000 matching grant. Those funds will cover renovations, operations for the first year and part of a second year.



Recliners: Based on a "Living Room" model, the centers will feature recliners instead of beds and offer short-term stabilization for people in crisis.

In **Elkhart County**, the crisis center will be housed at our Goshen campus. Renovations to the space are expected to begin this fall and continue through the spring, with an opening in mid-2024. Oaklawn received a grant from the **Division of Mental Health and Addiction**, as well as funds from Elkhart County, the City of Goshen and the Town of Bristol. **The project is fully funded** for renovations, two years of operations and the mobile crisis team serving Elkhart County.



Left: Zoe Frantz of Indiana Council; Jay Chaudhary, Director of the Division of Mental Health and Addiction; Laurie Nafziger, President and CEO of Oaklawn, and Kelli Liechty, Vice President of Access and Crisis Services at Oaklawn at the groundbreaking for the St. Joseph County crisis center on August 8, 2023.



Left: State Sen. David Niezgodski presents Oaklawn President and CEO Laurie Nafziger with a resolution recognizing Oaklawn's work at the groundbreaking for the St. Joseph County crisis center.

OAKLAWN

New South Bend campus

We're very excited to welcome clients and staff to **a new home at our South Bend campus**. Since we became the community mental health center for St. Joseph County in 2010, we've operated out of a historic building along the St. Joseph River that once served as the Singer sewing machine cabinet factory. But at 170 years old, and after many additions and modifications, the space was ill-suited to our needs.

In 2022, we purchased a newer building adjacent to the existing building and started a comprehensive renovation that March. At 60,000 square feet, the building features 10,000 more usable square feet than our previous space, including room for new programs and services, such as Open Access and our mobile crisis response team. Not only is the new space more attractive and inviting, but it's much easier to navigate and will improve the overall client experience. The total investment for the project is about \$17 million.

Permanent Supportive Housing

We strongly believe in the power of a housing-first approach – that when we meet someone's basic need for safe and stable housing, it empowers them to focus on other areas of their life and health. To that end, we continually seek partnerships with like-minded agencies to provide housing for people facing mental health and substance use disorders and homelessness.

Plans are under way for a new **Permanent Supportive Housing development**, called Deer Park, to be built on our 78-acre Goshen campus. The project, in partnership with **Lacasa**, will feature 48 units serving individuals and families. It will be built over a period of eight years with an estimated total cost of \$12 million. Phase 1, consisting of eight 1- and 2-bedroom units and a project cost of about \$2 million, is slated to begin by the end of this year and be completed by end 2024. Once open, Oaklawn staff will be on site to offer services to residents, with an emphasis on case management and recovery coaching.

This is one of several Permanent Supportive Housing projects that Oaklawn has recently completed with partners in both Elkhart and St. Joseph counties. Since 2017, we've partnered with Lacasa and the **South Bend Heritage Foundation** to build three other apartment complexes with a total of 65 1-bedroom apartments, as well as a duplex that serves families. Additionally, Oaklawn holds PSH tenant-based rental assistance grants in both St. Joseph and Elkhart counties. These grants serve an average of 130 individuals, including families, across the counties and are funded through HUD and IHCD.

Permanent Supportive Housing is just one of the many types of housing Oaklawn provides. We also operate four supervised group living homes with staff on-site 24/7, three transitional living homes with staff on-site part time and 63 traditional apartments that serve individuals living with mental illness and substance use disorder.



In 2022, we purchased this building and started a comprehensive renovation. At 60,000 square feet, the building features 10,000 more usable square feet than our previous space, including additional room for new programs and services, such as Open Access and our mobile crisis response team.



The new Deer Park development will look similar to this housing. Once complete, the development will feature a mix of 48 1- and 2-bedroom units.



OAKLAWN

Strong Systems of Care

Over our decades of service to the community, we've seen first-hand how strong partnerships can benefit our clients and community.

We're honored to help foster those partnerships through Systems of Care we host: **The SOURCE**, in Elkhart County, and **SJC Cares**, in St. Joseph County.



Child Dashboard Meeting 1: Community members gather in small groups to discuss data from the Elkhart County Child Dashboard and ways leaders can help positively influence those trends. The data dashboard is managed by The SOURCE, Elkhart County's system of care.



After brainstorming ways to boost child wellbeing in Elkhart County, leaders voted on which solutions they thought would make the most impact.



The SOURCE, Indiana's largest System of Care, has twice received multi-million-dollar grants from SAMHSA totaling nearly \$9 million – the first in 2016 and the second in 2020. The SOURCE has led numerous innovative initiatives in children's mental health, some as pilot programs that have been formally adopted at local agencies and others that continue to be operated by The SOURCE. These include:

- **The Partnership for Children**, a partnership among youth-serving agencies that trains youth workers in mental health-related topics and teaches staff to identify at-risk youth earlier, connect them to care faster and improve outcomes for children and families.
- Mental health services for youth engaged in the juvenile justice system.
- Infant and early childhood mental health training and services provided at local childcare centers.
- Assisting in the development and implementation of a child abuse prevention curriculum for preschoolers, to be used nationally by the **Monique Burr Foundation**.
- **The Elkhart County Child Dashboard**, which collects public and private data related to child wellbeing from local partners to identify trends, areas of concern and solutions for improvements, enabling leaders to make data-driven decisions and evaluate their efficacy. The dashboard is the first of its kind in the state.



Face Painting PFC Boys Girls Clubs Middlebury: The Partnership for Children brings youth-serving agencies together to train youth workers on mental health-related topics and teach staff to identify at-risk youth earlier, connect them to care faster and improve outcomes for children and families.

OAKLAWN

In 2015, **St. Joseph County's System of Care** was renamed **SJC Cares** and began an intentional focus on creating trauma-informed systems, which continues today. Some of SJC Cares' current initiatives include:

- Creating a DHMA-funded collaborative partnership with 10 local agencies to bring **safeTALK suicide prevention programs** to St. Joseph County. **safeTALK** has been provided free of charge to over 150 professionals, college students, and members of the general public in the past six months and is just one of several evidence-based trainings SJC Cares offers to the community.
- Launching and growing a **Partnership for Children** program with 13 local agencies.
- Providing **Botvin Life Skills programs** for students in six South Bend middle schools.
- Partnering with local agencies to provide **Be Strong Families** Parent Cafes, Vitality Cafes, Grief Cafes, Colleague Cafes and Youth Cafes to facilitate peer support among the various populations.
- Convening stakeholders in youth mental health and wellbeing for a monthly **SJC Cares Consortium** meeting for networking, resource sharing, and collaboration to address gaps in care for youth and families. Members of more than 50 local agencies regularly attend SJC Cares consortium meetings and belong to the St. Joe County SOC.

These are just a few of the exciting initiatives happening at Oaklawn – all grounded in our mission, **“With uncommon expertise in mental health and addiction services, Oaklawn joins with individuals, families and our community on the journey toward health and wholeness.”**

As an organization, we embrace our own journey as we grow to provide even more comprehensive services.

For more information about Oaklawn, or to stay up to date on our progress, follow us on social media or visit our website at www.oaklawn.org.



Suicide Prevention Training: SJC Cares leaders trained Resident Assistants at a local college on suicide prevention, a leading initiative for the St. Joseph County system of care.



16 Oaklawn Psychiatric Center, Inc.
330 Lakeview Drive, Goshen IN 46527
Designated in: **ELKHART, ST. JOSEPH**

Latest news

- **Congratulations to Denise celebrating 8 years at the council!** We thank her for her leadership and supporting our members over these past 8 years!
- Indiana Council has hired a new Data Warehouse project Manager, **Hannah Appah**, who began on September 11. She will be working remotely until January. This position will be supporting the Data Analytics Committee in their vision to build a statewide data warehouse.
- We have formed a new **Marketing Committee** to help with the messaging of our system and several other items. This committee will work together on system-wide messages and materials to lift up and provide education on our system.
- The Council also started a **Residential Treatment Subcommittee** to help in learning more about the services each of our members provide to assist in referrals and relationship development.
- The Council's **Human Resource Committee** is working with the DMHA Workforce Director on developing an early work force pipeline. This workgroup is meeting monthly. If you are interested in this workgroup, please reach out to **Lee Ann Jordan** so she can add you to our list.
- If you are interested in joining any of these committees or any others, please reach out to **Denise Wade** so that she can connect you with the Council lead and the Committee Chair.
- **The Council has become a member** of the **Association of Counties**, the **Association for County Commissioners** and the **National Association of County Behavioral Health and Development Directors**. We are doing this to elevate our system within each of these associations and to build relationships to help us by advocating for each of you. They also share a number of **county resources**. One was a key county contact list that Lee Ann sent out to all of you and the other one I wanted to share is from NACBHDD, it is more for county officials, but I thought it is a good resource to use in your county relationships. The resource is attached, and I will be sharing it with the other county associations as a resource.
- We have heard from some individual members of CMHC of their interest in becoming individual members of the council. **You do not need to be an individual member** if your CMHC is an agency member which all 24 are so enjoy the benefits of the council through your agency membership!
- The council submitted the **CCBHC RFI** to the State this past month. If you completed an RFI and are willing to share it with us to assist with our advocacy efforts, please share. If you did not submit and RFI can you please let me know soon since it is helpful in our advocacy as a system.

Fall Quarterly Meeting will be held in Bloomington – October 5 & 6th – you can register by clicking this link: [2023 Indiana Council Fall Conference Registration](#)



STATE UPDATES

American Society of Addiction Medicine Bridge the Gap trainings



ASAM eLearning

The **Indiana Division of Mental Health and Addiction** has partnered with the **American Society of Addiction Medicine** and **Ivy Tech Community College** to offer free in-person trainings throughout the State in August and September 2023.

The ASAM Bridge the Gap trainings are a full day, in-person course providing a review of the essential topics from the ASAM Criteria Foundations Course and the ASAM Criteria Utilization Management Course. The course is designed to ensure a full spectrum of services and to confirm the proper implementation of the ASAM Criteria.

The workshop content is based on information found in The ASAM Criteria: Treatment Criteria for Addictive, Substance-Related, and Co-Occurring Conditions, Third Edition and incorporates an opportunity for participants to practice applying the information through case-based activities. Learners will have the opportunity to ask the presenter questions in real time, participate in polling questions and break into small groups.

Clinicians and practitioners who have completed ASAM approved training can gain the initial skill set to deliver care in compliance with The ASAM Criteria.

The target audience for this introductory, intermediate, and advanced course includes counselors, social workers, payers, administrators, and other clinical staff.

This course covers the following ACGME competencies: Patient Care and Procedural Skills, Medical Knowledge, Practice-Based Learning and Improvement and Systems Based Practice.

Please follow the link to register for these trainings:

- **Sept. 25 – Terre Haute, IN**
- **Sept. 26 – Muncie, IN**
- **Sept. 28 – Noblesville, IN**
- **Sept. 29 – Noblesville, IN**

For any questions, please contact **Mark Loggins**

Anthem's meeting

- **September 22nd at 10:00am EST**
- **Contact [Lissi Lobb](#) at for more information**



Topic: The Addict's Wake Education Cut

I have invited the producer of **The Addict's Wake** to come and speak about her newest documentary geared towards youth grades 6-12. Anthem will be partnering with Lisa Hall to host 9 screenings of this film in High Schools across the State of Indiana.

The host schools will be announced by November. The film will be available to schools and organizations that serve youth populations by purchasing a license. The film will come with a companion guide/ curriculum to aid in facilitating discussion. Lisa is working to get corporate sponsors to provide funding for schools that do not have the funds but are interested in purchasing a license.

Biden-Harris Administration Awards More Than \$64 Million in Grants to Fund Mental Health and Substance Use Services and Trainings

On Wednesday, August 23, the U.S. Department of Health, and Human Services (HHS) announced more than \$64 million in awards through the Substance Abuse and Mental Health Services Administration (SAMHSA) to address the nation's mental health and substance use disorder crisis. The new funding, part of the Bipartisan Safer Communities Act, provides \$59.4 million through the Community Mental Health Services (MHBG) program. In addition, \$1 million was awarded for the Mental Health Awareness Training Grant program (MHATs). To read more about the grants, the Bipartisan Safer Communities Act, and more, [see the press release on the SAMHSA website.](#)

Indiana was awarded around 1.4 million which will be used for current block grant initiatives.

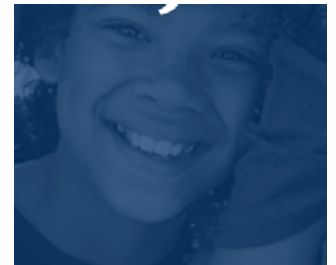
Funding Opportunity: Building Local Continuums of Care to Support Youth Success

The Office of Juvenile Justice and Delinquency

Prevention at the United States **Department of Justice (DOJ)** is **seeking applications for a funding opportunity** that aims to support communities in conducting planning and assessment activities that will inform the development of a community-based continuum of promising and evidence-based prevention and intervention services that will serve as a strong foundation for preventing youth from entering the juvenile justice system, diverting them from moving deeper into the system (i.e., detention and corrections) and ultimately providing them with the skills they need to lead productive, safe, healthy, and law-abiding lives.

Applications are due October 10th.

[>>> Learn more and apply here.](#)



Register for Hill Day at Home 2023!

Join the National Council for Mental Wellbeing for our annual Hill Day at Home October 18, from 1- 4pm ET.

Hill Day is an opportunity to urge law makers to support mental health and substance use policies without ever having to leave the comfort of your home or office. Hill Day at Home will feature educational panels and expert speakers on a wide range of topics, including 988 and crisis care, Certified Community Behavioral Health Centers (CCBHCs), substance use disorders, and more.

[For more information click here.](#)

[>>> Registration is open now.](#)



FEDERAL UPDATES

Inpatient Psychiatric Facility (IPF) Prospective Payment System

CMS has published its final rule on the **Inpatient Psychiatric Facility (IPF) Prospective Payment System (PPS) and Quality Reporting Program for fiscal year 2024 (FY24)** – CMS' [factsheet can be found here](#). Changes to regulations in the final rule will take effect on October 1, 2023.

Notably, finalized changes to the regulations include:

- **IPF Payment Rates:** The agency projects that total payments to IPFs will increase by 2.3 percent from FY23. The finalized rule will update the IPF PPS payment rates by 3.3 percent as well as update the outlier threshold resulting in estimated outlier payments at 2 percent of total payment, which is estimated to produce a 0.9 percent decrease in aggregate payments.
- **IPF Market Basket Rebase:** CMS' final rule will update the IPF market basket cost weights to a 2021 base year (from 2016) to reflect the most recent and complete set of hospital cost report data.
- **Excluded Unit Change:** In response to stakeholder feedback, updates to the regulations, applied to IPFs and Inpatient Rehabilitation Facilities, will allow a hospital unit to be paid under the IPF PPS if 30-day advance notice is provided to CMS.
- **IPF PPS Revisions:** Aligned with requirements established in the Consolidated Appropriations Act of 2023 (CAA 2023), CMS solicited stakeholder information to be considered in future rulemaking on additional data and information that psychiatric hospitals and units may report that would be valuable when considering revisions to the payment rates methodology.
- **IPF QRP:** Also consistent with CAA 2023, CMS is finalizing several changes under the IPF QRP – such as adoption of three measures around



health equity (inclusive of screening for social drivers of health), adoption of the Psychiatric Inpatient Experience survey, removes the Patients Discharged on Multiple Antipsychotic Medications with Appropriate Justification and two Tobacco Use measures beginning in FY25, as well as finalizing its proposed data validation program starting with CY25 submitted data.

The Departments of Labor, Health and Human Services, and Treasury recently issued a proposed rule, **Requirements Related to the Mental Health Parity and Addiction Equity Act**, that seeks to ensure health plans are in full compliance with the Mental Health Parity and Addiction Equity Act (MHPAEA).

The goal of the proposed rule is for individuals to benefit from the full protections afforded to them under MHPAEA and to provide clear standards for plans and issuers on how to comply with it. Specifically, the proposed rule would implement requirements that plans and issuers perform and document their non-quantitative treatment limitation (NQTL) comparative analyses and provide them to the agencies or an applicable state authority upon request for evaluation of compliance with MHPAEA.

The Departments of Labor, Health and Human Services, and Treasury have jointly expressed that in some instances, group health plans and health insurance issuers have not fully complied with the provisions of MHPAEA, which can lead to poor outcomes for individuals with mental health conditions (MH) and substance use disorders (SUD).

The proposed rule would:

- Clarify that MHPAEA requires plans to ensure individuals can access their MH/SUD benefits in parity with medical/surgical benefits.
- Require plans and issuers to gather and analyze data related to outcomes and implement

measures to rectify significant discrepancies in accessing MH/SUD benefits when compared to medical/surgical benefits, with an emphasis on ensuring that the application of network composition standards does not create any substantial disparities in access.

- Aim to modify the current NQTL standard to prevent health plans and insurance carriers from using NQTLs to impose more significant limitations on accessing MH/SUD benefits than medical/surgical benefits. The proposed rule would codify a requirement in the Consolidated Appropriations Act of 2021 (CAA 2021) that directs plans and issuers to perform meaningful comparative analyses of NQTLs by establishing guidelines for comparing the utilization of NQTLs in coverage to accurately assess their impact. This includes analyzing standards related to network composition, out-of-network reimbursement rates, and prior authorization NQTLs.
- Include examples of prohibited prior authorization practices and provide sample criteria for assessing network composition adequacy and out-of-network reimbursement rates.
- Seek input on potential new data requirements concerning a health plan's network composition and NQTLs.

- Eliminates plans' ability to seek first-time parity exemptions, and implements a sunset provision for large, self-funded non-federal governmental plans to prohibit their ability to renew existing exemptions.

If made final, the agencies predict changes in network composition and medical management methods that will eventually lead to more comprehensive MH/SUD provider networks and a reduction in the number and severity of prior authorization requirements for individuals seeking MH/SUD treatment. As I noted in a recent [Axios article](#), "The problem becomes now ... do we need to look at not only the number of providers included in the networks to be able to access, but the reimbursement of what they're getting?"

Comments on the proposed rule are due 60 days following publication in the Federal Register.

Additionally, the agencies issued a technical release requesting public feedback on the proposed new data requirements for limitations related to network composition. *Comments on the technical release are due no later than Oct. 2, 2023.*

CMS Releases 2024 Prospective Payment System Proposed Rule

Late last week the [Centers for Medicare and Medicaid Services \(CMS\)](#) released their proposed rule to update Medicare payment policies and rates for home health agencies. This rule proposes expanding the home health value-based purchasing model, adjusting expenditure rates and more.

>>> The full proposed rule and a fact sheet is available now on CMS's website.



COMMITTEE UPDATES

REL Committee

Committee Member Requirements: The committee does not have a skill set requirement as the committee extends a welcome to all BIPOC professionals from various employee levels within the CMHC & CCBHC spear, which helps reduce equity barriers for BIPOC individuals.

DMHA CLAS Project: The REL committee would like to thank each agency that participated in completing the CLAS survey. We know that each agency is extremely busy, and we appreciate your time. The CLAS survey was a baseline assessment of cultural and linguistic competency to help identify where each agency is on its journey of cultural humility, recognizing that cultural competency is a journey and not a destination. Here is a quick breakdown of what to expect next.

- Findings from the baseline assessment will inform next steps, including interviews, focus groups, and implementation of recommendations

What will you see at the end of this process?

- February 2024 - Each CMHC will have a Recommendations Report for both the Internal Culture and Delivery of Services
- April 2024 –Implementation Plan
- May 2024 – In-Person Leadership Workshop for CMHCs
- May 2024-October 2024 – TA will be provided for CMHCs to support recommendation implementation
- October 2024 – Implementation Report Finalized

REL Committee Mission Statement:

The Indiana Council Racial, Equity, and Leadership Committee is committed to driving the understanding, development, and implementation of DEI initiatives across the CMHC system while simultaneously providing mentorship and leadership development opportunities for the BIPOC-identified professionals.

Term of the month:

ANTI-RACISM

Anti-racism recognizes that there are no traits inherent within a racial group solely because of the color of their skin. Anti-racism forces us to analyze the role that institutions and systems play in the racial inequities we see, rather than assign the blame to entire racial groups and their “behavioral differences” for those inequities.

>>> **Read this article from NLC:**

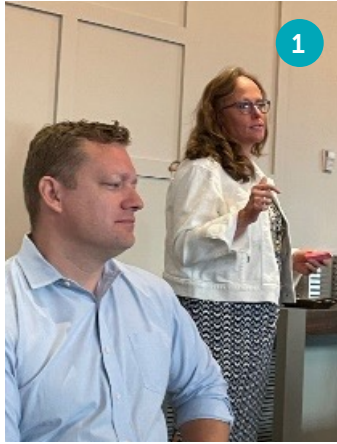
What Does It Mean to Be an Anti-Racist?

Marketing Committee:

The newly formed marketing committee held its first meeting in August, and we look forward to our next in the upcoming weeks. We identified 4 main objectives for our committee:

1. **United message for all Hoosiers**
2. **Statewide legislation message**
3. **Workforce Recruitment statewide**
4. **Statewide map if there that indicates all services/specialty services**

We look forward to working together and providing a unified message that we can share throughout the State!



1

1 - Zoe @ NatCon's Executive Retreat in Denver
2, 3- Zoe & Andy had the opportunity to visit Brock Lough and the Family Health Center Staff



2



3



4



5



6

An evening with former Congressman Patrick J. Kennedy!

- 4 Beth Keeney, Suzanne Koesel, Senator Michael Crider, Anne Hazlett, Zoe Frantz
- 5 Patrick J. Kennedy and moderator Butler Trustee
- 6 Suzanne Koesel, Beth Keeney, Rep. Victoria Wilburn, Zoe Frantz
- 7 Lee Ann Jordan, Beth Keeney, Lt. Governor Suzanne Crouch, Zoe Frantz, Suzanne Koesel



7

RECENT EVENTS



We are thrilled to announce that **Hannah Appah** has joined The Indiana Council family as our new Data Warehouse Project Manager.

Hannah brings a wealth of experience and expertise to our team, and we're excited to see the impact she will make in her role.

Join me in extending a warm welcome to Hannah!



- 1 - Brock Lough & Zoe Frantz speaking at the Indiana County Commissioner board meeting
- 2 - Lee Ann Jordan, Zoe Frantz, Brock Lough
- 3 - George Hurd, Dr. Jerome Adams & Zoe Frantz
- 4 - Zoe Frantz, Dr. Rahul Gupta – United State Drug Czar, George Hurd

Hoosier Burn camp is looking for mental health professional volunteers!

Hoosier Burn camp is in the process of looking for mental health professionals to volunteer at camp this year! If you are interested, you can contact Caitlin Dougherty at: caitlin@hoosierburncamp.org.

The dates for training and camp this year are:

March 2-3, 2024: Spring Training **May 26-31, 2004: Summer Camp**

May 25-26, 2024: Pre-camp Training

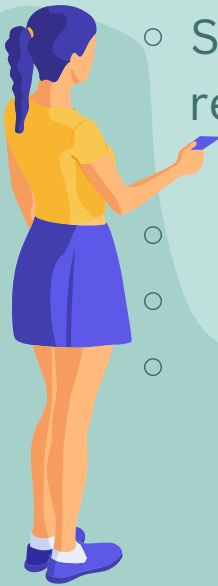


Accessing Message Boards



If you would like to start a conversation within a specific committee, please follow these steps:

1. After the login page, you will be **Home** to the right
 - Please click on "Participate"
 - Under "Participate", select "Groups"
2. When you selected "Restricted" you will see all of our committees listed
3. Please request access to join a specific committee
4. Once you are approved, you will be able to
 - Select to "notify me on updates" (so you will receive an email when someone posts to the group)
 - See who is in in the group
 - Start a "Conversation"
 - Conversations will be where you will post questions/comments to the group vs sending to everyone emails like we previously did



Accessing Message Boards



If you would like to start a conversation on a specific topic, please follow these steps:

1. After the login page, you will be Home to the right
 - Please click on "Participate"
 - Under "Participate", select "Conversations"
2. You will then be able to post a question and select the specific topic this is addressing
3. To receive notification on updates in the the different categories that you are interested in please update your preferences and interests at "My Account" on the top, go to "My account" > "Update preferences"



• Numbers show head office locations. • Click provider logos to visit their sites



1 Adult & Child
603 E. Washington St. – 9th Floor,
Indianapolis IN 46204
Designated in: [MARION, JOHNSON](#)



2 Aspire Indiana Health, Inc.
17840 Cumberland Road, Noblesville IN 46060
Designated in: [BOONE, HAMILTON, MADISON, MARION](#)
Also serving: [GRANT](#)



3 Otis R. Bowen Center for Human Services, Inc.
2621 E Jefferson St, Warsaw, IN 46580
Designated in: [HUNTINGTON, KOSCIUSKO, MARSHALL, WABASH, WHITLEY](#)
Also serving: [ALLEN, DEKALB, LAGRANGE, NOBLE, STEUBEN](#)



4 Centerstone of Indiana, Inc.
645 S. Rogers Street, Bloomington, IN 47403
Designated in: [BARTHOLOMEW, BROWN, DECATUR, FAYETTE, JACKSON, JEFFERSON, JENNINGS, LAWRENCE, MONROE, MORGAN, OWEN, RANDOLPH, RUSH, UNION, WAYNE](#)
Also serving: [CLARK, DELAWARE, HENRY, JOHNSON, MARION, PUTNAM, SCOTT](#)



5 Community Fairbanks Behavioral Health
8180 Clearvista Pkwy, Indianapolis, IN 46256
Designated in: [MARION, HANCOCK, SHELBY](#)
Also serving: [MADISON, JOHNSON](#)



6 Community Fairbanks Behavioral Health – Howard
322 N. Main St, Kokomo, IN 46901
Designated in: [CLINTON, HOWARD, TIPTON](#)



7 Community Mental Health Center, Inc.
285 Bielby Road, Lawrenceburg IN 47025
Designated in: [DEARBORN, FRANKLIN, OHIO, RIPLEY, SWITZERLAND](#) Also serving: [DECATUR, FAYETTE, HENRY, JEFFERSON, JENNINGS, RUSH, SCOTT, UNION, WAYNE](#)



8 Cummins Behavioral Health Systems, Inc.
6655 East US 36, Avon IN 46123
Designated in: [HENDRICKS, PUTNAM](#)
Also serving: [BOONE, MONTGOMERY, MARION](#)



9 Edgewater Systems for Balanced Living, Inc.
1100 West Sixth Avenue, Gary IN 46402
Designated in: [LAKE](#) Also serving: [PORTER, LAPORTE](#)



10 Family Health Center
515 Bayou Street, Vincennes IN 47591
Designated in: [DAVISS, KNOX, MARTIN, PIKE](#)



11 4C Health
401 E. 8th Street, Rochester, IN 46975
Designated in: [CASS, FULTON, MIAMI, PULASKI](#)
Also serving: [CARROLL, CLINTON, HAMILTON, HOWARD, TIPTON](#)



12 Hamilton Center, Inc.
620 Eighth Avenue, Terre Haute IN 47804
Designated in: [CLAY, GREENE, PARKE, SULLIVAN, VERMILLION, VIGO](#)
Also serving: [HENDRICKS, MARION, OWEN, PUTNAM](#)



13 LifeSpring Health Systems
460 Spring Street, Jeffersonville IN 47130
Designated in: [CLARK, CRAWFORD, DUBOIS, FLOYD, HARRISON, JEFFERSON, ORANGE, PERRY, SCOTT, SPENCER, WASHINGTON](#)



14 Meridian Health Services
240 N. Tillotson Avenue, Muncie IN 47304
Designated in: [DELAWARE, HENRY, JAY](#)
Also serving: [ALLEN, FAYETTE, HOWARD, LAPORTE, MADISON, MARION, RANDOLPH, RUSH, ST. JOSEPH, TIPPECANOE, WAYNE](#)



15 Northeastern Center, Inc.
220 South Main Street, Kendallville IN 46755
Designated in: [DEKALB, LAGRANGE, NOBLE, STEUBEN](#)



16 Oaklawn Psychiatric Center, Inc.
330 Lakeview Drive, Goshen IN 46527
Designated in: [ELKHART, ST. JOSEPH](#)



17 Park Center
909 East State Boulevard, Fort Wayne IN 46805
Designated in: [ADAMS, ALLEN, WELLS](#)
Also serving: [HUNTINGTON, WHITLEY](#)



18 Porter-Starke Services
601 Wall Street, Valparaiso IN 46383
Designated in: [PORTER & STARKE](#)



19 Radiant Health
505 N. Wabash Avenue, Marion IN 46952
Designated in: [GRANT, BLACKFORD](#)



20 Regional Health Systems
8555 Taft Street, Merrillville, IN 46410
Designated in: [LAKE](#)



21 Sandra Eskenazi Mental Health Center
720 Eskenazi Avenue, Indianapolis IN 46202
Designated in: [MARION](#)



22 Southwestern Behavioral Healthcare, Inc.
415 Mulberry Street, Evansville IN 47713
Designated in: [GIBSON, POSEY, VANDERBURGH, WARRICK](#)

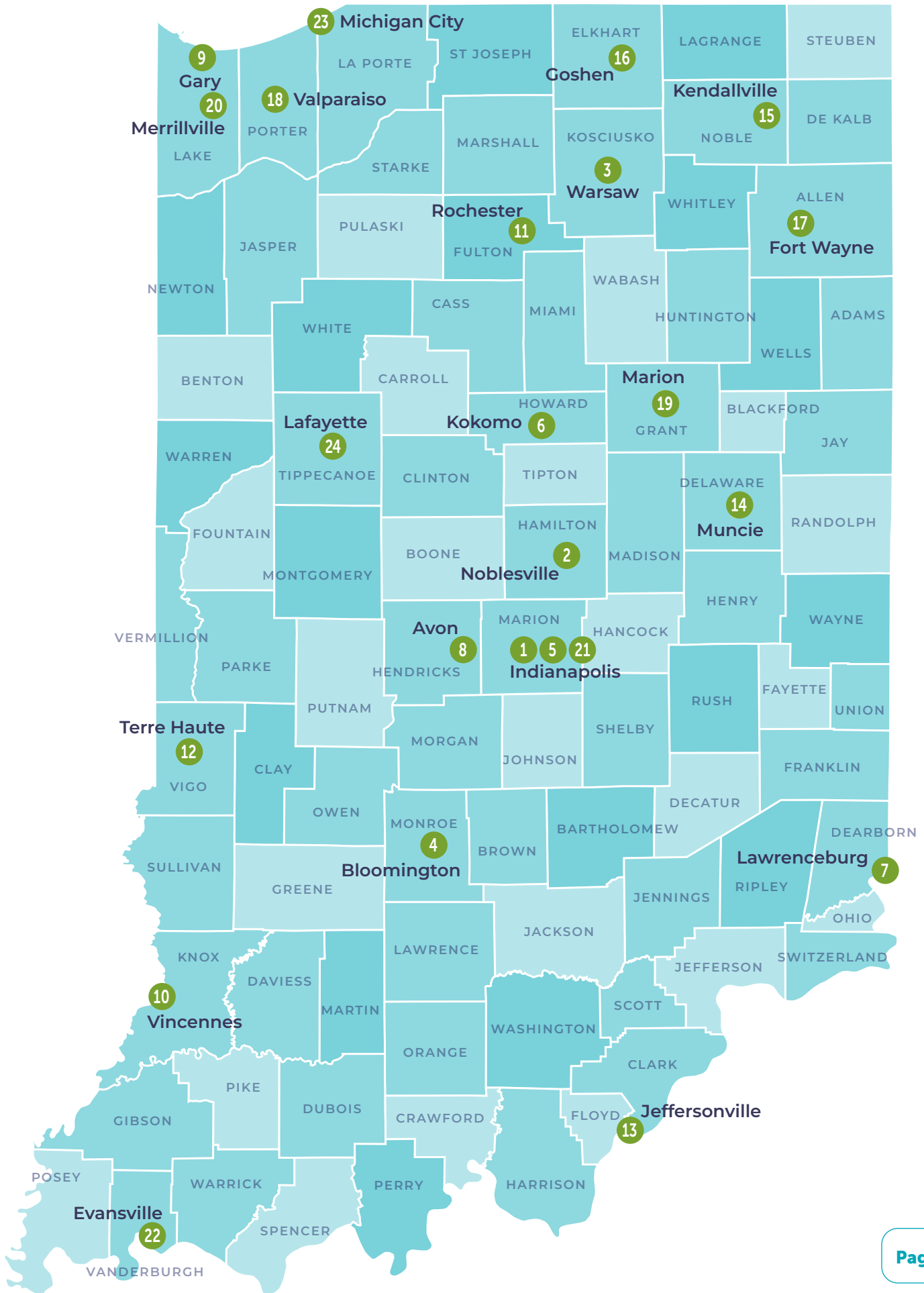


23 Swanson Center
7224 W. 400 N., Michigan City IN 46360
Designated in: [LAPORTE](#)



24 Valley Oaks
415 N. 26th Street, Lafayette, IN 47904
Designated in: [BENTON, CARROLL, FOUNTAIN, JASPER, MONTGOMERY, NEWTON, TIPPECANOE, WARREN, WHITE](#)

[>> Click here to view provider details on our site](#)



Calendar 2023 Save the dates!

Cup of Joe with Zoe

Half hour State leader meet and greet with our members and partners.

First Tuesday each month at 8:30am EST via Zoom.

UPCOMING DATES:



>> [Click here for Zoom link](#)

Meeting ID: 210-953-5684
Password: ICCMHC

October
3

November
7

December
5

2023 Fall Quarterly Meeting

Fall Quarterly Meeting will be held in Bloomington – October 5 & 6th –

you can register by clicking this link:
[2023 Indiana Council Fall Conference Registration](#)



For further information on any of these events please contact [LeeAnn Jordan](#)

Dates correct at 09-19-23

[Click here to visit our events pages](#)