



Welcoming our member highlight Swanson Center

Serving the community in LaPorte County for more than 40 years

 **Swanson Center**

Read more on pages 10 - 13

Also this issue:



**State &
Federal
updates**
Pages 14 - 16



**Recent
Events**
Pages 18 - 19



A Season of Gratitude and Momentum:

NOVEMBER/DECEMBER MESSAGE FROM ZOE FRANTZ, PRESIDENT & CEO,
INDIANA COUNCIL OF COMMUNITY MENTAL HEALTH CENTERS

As we move into the close of 2025, I am reflecting with a deep sense of gratitude and pride. This month marks my four-year work anniversary with the Council, and I continue to be inspired by the collective leadership, resilience, and unwavering commitment of our staff, our board, our members, and our state and federal partners. Together, we have made extraordinary progress- locally, across Indiana, and nationally - to strengthen community behavioral health.

Celebrating Four Years of Growth and Impact

When I look back to where we began and where we stand today, it is remarkable. Over the past four years, we have:

- **Expanded our CCBHC footprint**, strengthening readiness, data capabilities, and operational alignment across the state.
- **Advanced crisis services**, mobile response, stabilization centers, and local partnerships that are now viewed as models nationally.
- **Successfully navigated major shifts** in Medicaid, state policy, and federal priorities- always centering sustainability and workforce needs.
- **Built trusted relationships** with legislators, state agencies, federal partners, law enforcement, local officials, hospitals, and countless community collaborators.
- **Strengthened our internal infrastructure** at the Council - growing our staff, stabilizing our strategic plan, deepening our data work, and expanding our advocacy capacity.

None of this happened alone. It happened because of YOU- the leaders who show up every day to deliver care, support your teams, innovate, and keep Indiana's behavioral health safety net strong.

A Season of Gratefulness

The last two months have been a powerful reminder of just how strong this network is.

Thank you to all who attended **Hill Day in Washington, D.C (see page 8)**. Your presence, your stories, and your leadership made an impact on national policymakers at a crucial moment for our network.

Thank you as well to everyone who joined us at our **October Conference (page 22)**. The energy, expertise, and collaboration were unmatched. It was one of our strongest conferences yet, and that reflects the dedication of our members, presenters and partners.

At the October business meeting members voted for a new board member, **Beth Keeney**, CEO, LifeSprings Health systems (**page 9**). The board also voted on the following seats –

- **Steve Howell**, Chair – CEO of Northeastern
- **Greg Duncan**- Vice Chair- CEO of InCompass Health
- **William Trowbridge**- Secretary- CEO of Regional Health

Congratulations to all and I look forward to working with you in achieving our strategic vision and plans.

We also celebrated a couple of **crisis openings** the past month. It was wonderful to attend these events and see the work of our members in approving access to behavioral health care (**see 18-19**).

A special thank-you to **Swanson Center (see 10-13)** for being our **Member Spotlight** for this issue. Your innovation and commitment to serving your community exemplify who we are as a network.



State Policy Momentum

As many of you know, **Indiana Legislative Organization Day is November 18, 2025**, marking the formal start of the 2026 session. Our policy work is already underway, and we will be fully engaged on issues tied to crisis sustainability, CCBHC expansion, workforce, Medicaid reimbursement, and administrative simplification. The relationships we have built- and continue to strengthen, will be critical in the months ahead.

Please also **save the date for State Hill Day** on February 17, when we will bring unified, data-informed advocacy to the Statehouse. Your presence makes all the difference.

To register [see page 24](#).

See the Council's legislative platform on [page 14](#).

Federal Advocacy: Moving Forward After the Shutdown

We are grateful the federal government shutdown has ended, allowing Congress to resume work on the budget and critical mental health funding discussions. Our national advocacy now shifts firmly toward protecting and advancing investments in:

- CCBHC expansion
- Crisis system support
- Workforce development
- Medicaid stability

We will continue to keep you informed as negotiations unfold, and opportunities arise to elevate Indiana's needs.

Looking Ahead with Gratitude

As we enter this holiday season, I want to extend my heartfelt appreciation for your commitment to your communities, your collaboration with one another, and your partnership with the Council.

This year has challenged us, stretched us, and strengthened us and we have never been more aligned or more determined. I am profoundly grateful to do this work with each of you.

Wishing you and your families a warm, restful, and joy-filled holiday season.

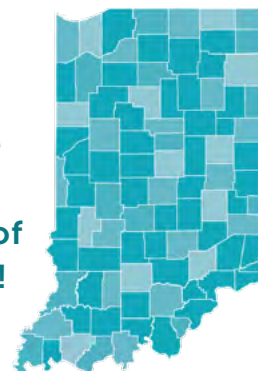
With gratitude and partnership,

Zoe Frantz President, CEO
zfrantz@indianacouncil.org

Letter from Zoe	2 - 3
About Indiana Council	4 - 5
Partner highlight - ISC Group	6 - 7
Indiana Council News	8 - 9
Member Spotlight with Swanson Center	10 - 13
State Updates	14
Federal Updates	15 - 16
CMHC News	17 - 19
Committee & Grant Updates	20 - 21
Recent Events	22
Calendar	24
National Council GPP	25
Our Providers Map	26 - 27

*Indiana Council member providers -
serving all 92 Indiana counties*

**Together,
building the
health and
well-being of
all Hoosiers!**



© 2025 Indiana Council of
Community Mental Health Centers

indianacouncil.org

[LinkedIn](#) [Twitter](#)

[Facebook](#)



Design by
John Fordham Design

The Indiana Council of Community Mental Health Centers

represents the collective interests of all community mental health centers (CMHCs) currently certified and accredited to provide community-based behavioral health services across all ninety-two counties in Indiana.

CMHCs in Indiana served over 300,000 behavioral health consumers in 2023.

CMHCs provide services primarily to those suffering from severe behavioral health and substance abuse conditions which further reduce additional costs to society by directing coordinated care to our most vulnerable citizens.

Click the image below to view / download our flyer on the benefits provided to our communities by our network of CMHCs.



How do CMHCs benefit their communities?

Indiana's Community Mental Health Centers (CMHCs) provide comprehensive mental health care to persons of all ages who suffer from mental illness or substance use disorders.

- The 24 CMHCs focus on serving economically disadvantaged Hoosiers and those who typically encounter difficulties accessing care.
- The services CMHCs provide to their communities include: inpatient and outpatient treatment, crisis services, services for children and adolescents, elderly people, substance use services, residential services, peer-led services and more.
- CMHCs provide life-improving, critical mental health services to Hoosiers who otherwise might never receive care, including the economically disadvantaged, persons involved in the criminal justice system, and persons who are experiencing homelessness.

CMHCs have a positive impact on Indiana's economy.

- The overall economic footprint of CMHCs statewide is nearly **\$1.4 billion**.
- CMHCs directly employ **11,629** Hoosiers, and indirectly support the jobs of an additional **3,511** Hoosiers through the supply chain, and via income generated by the CMHCs.
- Every **\$1.00** invested by CMHCs generates another **\$0.59** in additional economic activity.
- CMHCs help improve the state's mental healthcare workforce by providing internships to graduate students to learn skills needed to work in a community mental health environment.

Total Economic Impact for Indiana
\$1,382,440,371 annually
\$510,369,305 HOUSING
\$872,000,068 DIRECT

Tax Revenue Generated
\$186 Million annually
\$35.5 Million STATE & LOCAL
\$150.6 Million FEDERAL

Employment
15,3040 TOTAL JOBS
3,511 HOUSING
11,629 DIRECT

How can you support Indiana CMHCs?

CMHCs face many challenges, the biggest of which are acquiring and retaining a quality workforce, lack of adequate funding, and administrative burdens. The following measures would assist CMHCs to provide Hoosiers with more effective and timely services...

- Continue telehealth supports, alongside face-to-face services, during the first year of the COVID-19 pandemic.
- Continue and expand the Certified Community Behavioral Health Clinician (CCBHC) grantee program; implement Prospective Payment System rate methodology.
- Increase Medicaid reimbursement rates to reflect the true cost of services.
- Provide incentives to work at CMHCs, such as student loan repayment or tuition reimbursement.
- Improve the licensure process by streamlining licensure to get a license more quickly.
- Reduce the administrative burden on CMHC staff by streamlining processes and reducing paperwork.
- Allow reimbursement of support services for consumers, such as transportation to and from the CMHC.
- Improve Hoosiers' mental health literacy to help them recognize, manage and prevent mental health and substance use disorders.

Text adapted from The Impact Of Indiana's Community Mental Health Centers by the Center For Health Policy.
View/download the full report here

Indiana Council of Community Health Centers,
100 West Ohio Drive, Suite 610 Indianapolis, IN 46204
(317) 684-3884 indianacouncil.org

or scan this QR code:



KEY CONTACTS:

Zoe Frantz

President, CEO

812-298-4533 zfrantz@indianacouncil.org

Denise Wade

Chief Administration Officer

317-684-3684 dwade@indianacouncil.org

Lee Ann Jordan

Director of Communication & Membership

317-650-4972 ljordan@indianacouncil.org

Nancy Henry

Data Quality Assurance Manager

nhenry@indianacouncil.org

Sydney Moulton

Director of State & Local Government Affairs –

smoulton@indianacouncil.org

LOBBYISTS:

Kelli Waggoner

1816 Public Affairs Group

317-213-3876

Grant Waggoner

1816 Public Affairs Group

317-430-9860

Lou Belch

The Corydon Group

317-213-3884

Devon Anderson

The Corydon Group

danderson@thecorydongroup.com

317-634-5963

Abigail Kaercher

Federal Lobbyist

Hall & Render

akaericher@hallrender.com

202-742-9674



Friends of Indiana Council PAC

WHAT IS THE CMHC-PAC?

The Friends of Indiana Council-PAC is a political action committee made up of representatives from community mental health centers across the state of Indiana. Its sole purpose is to advance community mental health providers' position in the Indiana General Assembly.

Friends of Indiana Council-PAC does just what its name says: takes action on the political issues that matter to you and the people you serve.

OUR PURPOSE:

To serve as the voice of behavioral healthcare in the Indiana General Assembly.

OUR MISSION:

- To inform elected officials about policies, programs and initiatives that impact the public behavioral healthcare system.
- To build relationships with public officials and candidates for state elected office.

WHY IS CMHC-PAC NEEDED?

Government activity at both state and federal levels has a direct impact on behavioral healthcare providers. A strong political action committee is an essential tool for any effective governmental relations effort. Your individual participation in the political action process can shape public policy that is responsive to the needs of CMHCs and the communities they serve.

WHO CAN CONTRIBUTE?

Voluntary contributions to the Friends of Indiana Council-PAC may be accepted from any U.S. citizen.

WHERE WILL MY CONTRIBUTION GO?

A contribution to the Friends of Indiana Council-PAC fundraising campaign will help your voice be heard across the state of Indiana. Funds raised are used to present issues of concern to candidates for state elected offices. This support is given to candidates and elected state office holders that share the goals of CMHCs. Contribution decisions are made by the Indiana Council Board members and public policy committee members.

HOW DO I CONTRIBUTE?

Contributions can be made by a direct donation via our website:

- [Click here to go to our donation page.](#)

Otherwise, checks can be made out to **Friends of Indiana Council-PAC** and sent to: PO Box 609 Jeffersonville, IN 47131.

IS MY CONTRIBUTION TAX DEDUCTIBLE?

Contributions to PACs, including Friends of Indiana Council-PAC, are not deductible for income tax purposes.

If you have any questions please reach out to Sydney Moulton:

smoulton@indianacouncil.org

Donate to the PAC and get our new Indiana Council scarf!

CALL FOR NEW AFFILIATE MEMBERS

The Indiana Council invites government agencies, nonprofits, healthcare partners, and academic institutions, to join us as Affiliate Members.

As an Affiliate Member, you'll:

- Connect with leaders from across Indiana's mental health landscape and collaborate on statewide initiatives and policy efforts

Join the Indiana Council as an Affiliate Member and be part of Indiana's leading voice for behavioral health.

- Access exclusive events, trainings, and data insights
- Support the advancement of behavioral health services across Indiana

Your membership strengthens a statewide network committed to improving lives through accessible, quality mental health and addiction services.

Interested? [Click here to visit our Member Application page!](#)



ISC Group — Retirement Plan Advisors for Indiana's CMHCs

Partnering with you to deliver successful retirement outcomes, reduce administrative burden, and provide fiduciary/compliance support & guidance

Since 1987, our mission statement has been “serving those in service to others™”. We currently serve over 250 non-profit hospitals and mental health organizations. Our goal is to help your employees reach a dignified retirement .

Who we are

ISC Group is a retirement plan advisory firm serving organizations nationwide with bespoke solutions for plan design, fiduciary support, investment due diligence, and participant education. We partner with employers to make plans easier to administer and more valuable for staff.

Why it matters for CMHCs

When your employees are financially secure, research shows that this can have a significant impact in terms of employee morale, productivity, presenteeism, absenteeism, and turnover. In a tight behavioral-health labor market, competitive, well-run retirement plans help you recruit and retain clinicians and frontline staff. ISC provides fiduciary and governance support (Investment Policy Statement reviews, committee training, fee benchmarking) and manages recordkeeper RFPs/benchmarking to keep costs transparent and service levels high—so your team can focus on delivering high-quality healthcare.

Participant education & financial wellness

Through our “WellCents™” platform, we deliver 1-on-1 guidance (virtual or onsite), simple action plans, and data-driven follow-up to help employees cut stress and build confidence—boosting engagement without adding work to HR. It is important to do this on a consistent basis, in both a group setting and in an individual setting.

Local to Indiana

Our Indiana team is led by **Greg Poplarski**, SVP, Retirement Services (Carmel, IN)—registered with ISC Advisors, Inc. and Institutional Securities Corporation—and dedicated to supporting Hoosier CMHCs.





How we can help this year

- 403(b)/401(a)/401(k)/457 plan design reviews focused on retention & cost control
- Recordkeeper RFP/benchmarking with apples-to-apples comparisons
- Investment due diligence & documentation to support committee fiduciary files
- Onsite/virtual financial-wellness days and 1-on-1 employee sessions
- Ongoing virtual webinars on a variety of topics (529s, Roth, Medicare, Social Security, Retirement Income Options, etc.)

Develop a retirement plan committee of your employees to solicit feedback and develop a theme based educational program.

Let's connect

With ISC Team Members

Email: GPoplarski@iscgroup.com

Phone: (770)-861-3839

Email: MSmith@iscgroup.com

Phone: (214)-293-3571

Email: BLeitner@iscgroup.com

Phone: (214)-520-1115

Email: GJuno@iscgroup.com

Phone: (214)-520-1115

Email: AEhler@iscgroup.com

Phone: (214)-520-1115

Learn more: iscgroup.com

Next Steps

Most plan sponsors will conduct a fiduciary due diligence review of their plan every 3-5 years. We would be honored to help you conduct a specific review of your plan. This review looks at the fee structure, fund selection and performance, administrative efficiency, participant outcomes, and ERISA compliance. **Please contact us using the above information.**



ISC

Hill Day 2025

Thank you to our incredible Indiana Council staff, lobbyist team, and dedicated members for showing up strong at Hill Day.

Your engagement, advocacy, and commitment to strengthening community mental health made a powerful impact. We're grateful for your time, energy, and passion as we work together to advance critical priorities for the people we serve. We couldn't do this work without you.

Thank you for representing Indiana with such leadership and pride.



1 Sydney Moulton (left), Nancy Henry (right) @ Hill Day 2025 Washington DC



2 Beth Keeney (left), Lisa Dominisse, Sydney Moulton, Nancy Henry

3 Rob Backmeyer, & Michael Drake

4 Hill Day

5 Zoe Frantz and other Hill Day panelists

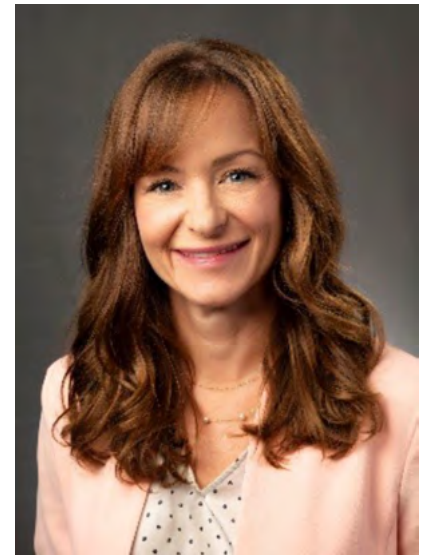


Welcoming Beth Keeney to the Council's Board

Indianapolis, IN — 10.20.25

The Indiana Council of Community Mental Health Centers is pleased to announce the appointment of Beth Keeney, President and CEO of LifeSpring Health Systems, to its Board of Directors.

Beth brings more than two decades of leadership experience in community mental health and integrated healthcare to the Indiana Council's Board. Under her leadership, LifeSpring Health Systems has expanded its reach and impact across southern Indiana, providing high-quality behavioral health, primary care, and substance use treatment services to thousands of Hoosiers each year.



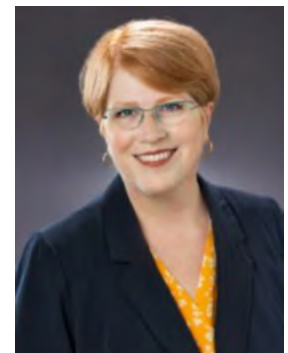
"Beth's commitment to improving access to mental health care and her innovative approach to integrated services make her an invaluable addition to our Board," said Zoe Frantz, President and CEO of the Indiana Council. "Her experience and perspective will help guide our work as we continue to advocate for policies that strengthen Indiana's behavioral health system and support the vital work of community mental health centers statewide."

The appointment of Ms. Keeney reflects the Indiana Council's ongoing commitment to ensuring strong leadership within its governance structure. As a board member, she will help shape the organization's strategic direction and policy priorities, advancing the mission of promoting accessible, high-quality community mental health and addiction services for all Hoosiers.

Suzanne Koesel of Centerstone retires

On behalf of everyone at the Indiana Council of Community Mental Health Centers, we want to express our heartfelt gratitude to Suzanne Koesel, for her many years of service, leadership, and dedication to improving behavioral health care across Indiana.

Suzanne's steadfast support of the Council and her tireless advocacy for those we serve have made a lasting impact—not only within Centerstone, but throughout our entire community. Her insight, compassion, and collaboration have helped shape stronger systems of care and inspired countless colleagues along the way.



As you retire, we celebrate an incredible career and the legacy you leave behind. We wish you all the best in this next chapter and hope it brings you as much fulfillment and joy as the career you've so richly devoted to helping others.

Swanson Center

*Swanson Center
main building*



The Swanson Center, serving as a vital resource for mental and behavioral health services in La Porte County, offers a comprehensive range of treatments and programs. With nearly 100 employees across its Michigan City and La Porte offices, the Center provides psychiatric care, individual and group therapies, substance use disorder treatment, school and community-based case management, and much more.

Swanson Center's roots run deep in LaPorte County. Back in 1952, local residents recognized a growing need for accessible mental health services and came together to form LaPorte County Mental Health Services. What began as a small outpatient clinic evolved over time, changing names and expanding programs as the needs of our community continued to grow.

A significant milestone came in the late 1960s with the passage of the Community Mental Health Center Act, which helped expand access to mental health services across underserved communities. In 1969, Indiana officially designated the Adult and Child Guidance Clinic as a community mental health center, and the organization became the LaPorte County Comprehensive Mental Health Council, Inc.

Throughout the 1970s, services expanded rapidly to include crisis intervention, partial hospitalization, substance use treatment, residential care, and specialized programming for children and adolescents. With locations opening in both Michigan City and LaPorte, the Center became an increasingly visible and trusted resource across the county.

In 1981, the organization began doing business as Swanson Center, in honor of local mental health advocates Ray and Lucy Swanson. While the early 1980s were marked by both growth and financial



Jennifer Heath, Director of Swanson Center Foundation for Behavioral Health, gains approval from the LaPorte County Commissioners to recognize May as Mental Health Awareness Month in May 2025.

R-L: Commissioner Steve Hollifield, Commissioner Connie Gramarossa, Jennifer Heath, Commissioner Joe Haney.

challenges, the dedication of staff, leadership, and Board members carried the organization through difficult times. After filing for bankruptcy in 1986, Swanson Center rebuilt with resilience and purpose.

The following decades brought renewed stability and expansion. During the 1990s and early 2000s, Swanson Center grew its residential, outpatient, and youth services and earned Joint Commission accreditation. In 2002, it became one of the first providers in Indiana to launch an Assertive Community Treatment (ACT) team, further strengthening support for individuals with serious mental illness.

As the mental health landscape evolved through the 2010s, Swanson Center adapted by embracing recovery-oriented care, person-centered treatment, and a stronger focus on empowerment and wellness. Investment in staff development and community partnerships became key pillars of the organization's long-term impact across LaPorte County.



U.S. Rep. Frank Mrvan, D-Highland, speaks with Matthew Burden, CEO of Porter-Starke Services, and Katie Jasnieski, CEO of Swanson Center community mental health center, before the start of a roundtable to discuss current challenges related to Medicaid at Porter-Starke Services Tuesday, July 29, 2025, in Valparaiso, Indiana. The event drew representatives from Federally Qualified Health Centers and Community Mental Health Centers from across Northwest Indiana. (Andy Lavalley/for the Post-Tribune)

Chicago Tribune article spotlighting mental health efforts in Northwest Indiana, and the dire impact of Medicaid cuts. It features key insights from Congressman Frank Mrvan, our very own CEO Katie Jasnieski, and Matt Burden, CEO of Porter-Starke Services.

[Read the article here](#)



Swanson Center staff participated in both the Michigan City and LaPorte Patriotic Parades this year. (Fun fact: LaPorte, Indiana, has the longest running Fourth of July Parade in the state, and is designated as the state capital for the day each year)

Today, Swanson Center continues to serve as LaPorte County’s comprehensive mental health provider under the leadership of **CEO Katie Jasnieski** and **Medical Director Sara Bachani, MD**. From outpatient therapy and psychiatric services to crisis response, addiction treatment, residential care, and community outreach, the Center remains committed to meeting people where they are. Ongoing efforts to strengthen programming and align with Certified Community Behavioral Health Clinic (CCBHC) standards reflect a deep commitment to accessible, high-quality care.

Through every chapter of its history, one thing has never changed: Swanson Center’s mission to walk alongside individuals, families, and communities—supporting healing, building hope, and improving lives, one person at a time.



CEO Katie Jasnieski

Medical Director
Sara Bachani, MD



SOME SWANSON HIGHLIGHTS OF 2025

- **Health Foundation of La Porte awards \$75,000** for Swanson Center's PATH Behavioral Health Outreach
- Swanson Center receives **\$25k "Compassion in Crisis" grant** award from Health Foundation of La Porte (HFL)
- Swanson Center receives **\$25k Healthy Minds grant** from Health Foundation of La Porte (HFL)
- **Unity Foundation** of La Porte County awards Swanson Center grant for "Outreach to Homeless Individuals in LaPorte County"
- Swanson organises **Run for Hope 5k** - suicide awareness event



Participants cheering as they cross the finish line at **Run for Hope 2025** - Our annual 5k to raise awareness for issues surrounding mental health and suicide awareness. In its second year, the Run for Hope garnered approximately \$15,000 in sponsorships, and 145 total registrants. The 2025 theme for the event was "Follow the Road to Hope".

"Everyone faces stress at one time or another. Whether it is trouble at work, family difficulties, or substance abuse, none of us can cope with all life's challenges on our own. Fortunately, Swanson Center is here for you when things get tough. For more than 40 years, our dedicated community mental and behavioral health staff has been serving people in LaPorte County. With our helpful staff, hometown roots, and longstanding ties to the community, we care about you as a person and a fellow neighbor."



23 Swanson Center

7224 W. 400 N., Michigan City IN 46360

Designated in: **LAPORTE**

Call: 219-879-4621

www.swansoncenter.org

Pilot for Treatment Programs Named in Honor of Judge Kramer

The Indiana Office of Judicial Administration, through its Office of Behavioral Health, is beginning a pilot for Assisted Outpatient Treatment programs. It has selected seven counties to join three mentor counties, with the ten making up the Hon. Michael J. Kramer AOT Program Initiative. It's named in honor of longtime Noble County Judge Kramer—who passed away in March 2025. Judge Kramer dedicated his life to service, leading with compassion, and promoting best practices for those experiencing mental illness.

Congratulations to our members participating as pilot sites in this initiative!

[Read more about this program here](#)



Join us at the Indiana Mental Health & Addiction Symposium, December 12 2025



presented by **Mental Health America of Indiana**, as we move from Innovation to Implementation — supporting Hoosiers and strengthening behavioral health across the state.

This annual event brings together leaders, advocates, and professionals from across Indiana for a day of connection, collaboration, and progress.

Registration is filling up fast! Secure your spot today and be part of the conversation shaping the future of mental health and addiction recovery in Indiana!



[Click to read the Indiana Council
2026 Public Policy Platform document](#)



Register here:

2025 Mental Health Symposium - MHAI Events

You are not able to register at the door so please buy your tickets ahead of time. This event sells out each year so purchase tickets soon!

Federal News

House GOP Plans Health Care Talks as Tax Credit Deadline Looms

Politico reports that House Republican leaders will hold a series of listening and brainstorming sessions next week to gather member input on health care policy, especially what to do about enhanced Affordable Care Act premium tax credits that expire on Dec. 31.

Moderates and vulnerable incumbents have indicated they are open to extending the subsidies, while other conservatives — especially in the Republican Study Committee — are pushing for a plan focused on lowering costs through other reforms or shifting support to health savings accounts. Rep. Don Bacon (R-Neb.), who is part of a bipartisan group proposing a compromise, says major reforms aren't realistic before year's end.

HUD Announces Changes to CoC Program in New NOFO

The Department of Housing and Urban Development (HUD) announced policy changes Nov. 14 that make significant changes to a permanent housing program serving people experiencing homelessness.



According to a HUD press release, the changes seek to “restore accountability to homelessness programs and promote self-sufficiency among vulnerable Americans. It redirects the majority of funding to transitional housing and supportive services ...” According to the notice of funding opportunity (NOFO), roughly 7,000 awards are expected, totaling about \$3.9 billion. A new 30%



cap on permanent housing projects means they can receive no more than approximately \$1.2 billion of the program's total funding. **Under the NOFO**, in order to receive maximum scoring when applying for awards, among other factors, programs must demonstrate a “formal partnership with a Certified Community Behavioral Health Clinic (CCBHC) or Community Mental Health Center (CMHC) or a similar facility if no CCBHCs or CMHCs are located in the geographic area.”

KFF Reports Results of Annual State Medicaid Survey

Earlier this year, KFF and several partner organizations **conducted an annual budget survey** of Medicaid officials in each state and the District of Columbia; they asked specific questions about actions states planned to take to prepare to implement H.R.1 work requirements.

KFF

The organizations received responses from 42 of the 43 states where work requirements will be implemented — including all Medicaid expansion states, the District of Columbia, and Georgia and Wisconsin, which have not expanded Medicaid through traditional means but have waivers in place that cover the expansion population. States surveyed

identified a number of potential challenges related to implementation.

Among them, many states noted that eligibility/claims/data-matching infrastructure is currently limited, and building interfaces across agencies and programs will take time. Some states are already engaged in multi-year IT system modernization projects, and adding the infrastructure needed to implement work requirements and other Medicaid changes to this process will likely prove burdensome.

Government Appeals PRWORA Reinterpretation Cases

The federal government has **filed notices of appeal** in two separate cases contesting its revised interpretation of what qualifies as a “federal public benefit” under the Personal Responsibility and Work Opportunity Reconciliation Act (PRWORA). Earlier this fall, both district courts hearing the cases issued injunctions halting the administration’s reinterpretation of PRWORA, blocking its enforcement and implementation until the cases are fully resolved or the injunctions are lifted by either the district or appellate courts. The confusion surrounding this policy shift began in July, when several federal agencies announced that certain federal programs serving individuals, households and families would immediately become subject to stricter immigration eligibility requirements. The programs listed included services provided by Certified Community Behavioral Health Clinics (CCBHCs) and Federally Qualified Health Centers (FQHCs), among others.



Updates to CMS Final Rule for 2026

The Centers for Medicare and Medicaid Services (CMS) recently released its Calendar Year 2026 Medicare Physician Fee Schedule (PFS) **Final Rule**. This annual final rule provides updated payment policies for services under Medicare Part B. Provisions under this rule become effective on Jan. 1, 2026.

This is the first positive physician fee schedule adjustment that CMS has made in years. The estimated impact on total allowed charges by specialty can be found at **90 FR 49963**.

Updates to Medicare payment policies under this rule include permanently removing frequency limitations for subsequent inpatient visits, permanently adopting a definition of direct supervision that allows for audio/video real-time communication technology, creating three new add-on codes for Advanced Primary Care Management services to strengthen integrated care, and makes revisions related to services addressing upstream drivers of health.

We’ve posted a summary of points impacting mental health and substance use services.

(Click image)



Celebrating Excellence at the 2025 Hamilton Awards Dinner

Hamilton Center, Inc. recently hosted its annual Hamilton Awards Dinner at Indiana State University's Sycamore Banquet Center, bringing together more than 300 staff, community partners, and friends for an evening of celebration and gratitude.

This year's theme, "Every Person, Every Journey: Strength in Every Story," captured the heart of Hamilton Center's mission—honoring the individuality of every person served and the courage it takes to move forward on the path to wellness and recovery.

Our keynote speaker was **Senator Gregory Goode**. Senator Goode provided a motivating speech regarding advocacy for those with behavioral health and addiction issues. He showed gratitude for Mr. Melvin L. Burks and his continued diligent effort within the community and the State of Indiana surrounding behavioral health, addiction, and diversity efforts.





Congratulations to Aspire

on the opening of their mobile crisis unit – **Rely!**

Rely Center: 17840 Cumberland Road,
Noblesville, IN 46060

Call (855) 765-7359

Open Monday through Friday,
12-8 p.m.

relycenter.org



*Executive staff at the ribbon cutting
for Rely Mobile Crisis*



*Rely has 2 mobile crisis vans
that are able to serve and
answer calls throughout the
community*





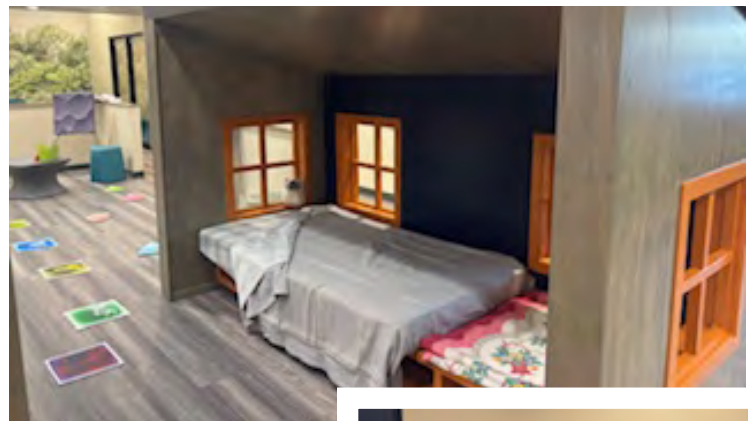
Family Health Center

Congratulations to Family Health Center

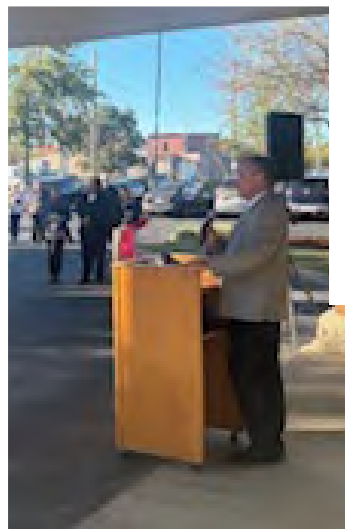
on the opening of their new **Green Door Crisis Center**, located at 300 N 1st St, Vincennes, IN 47591.

The center provides trained crisis specialists, a mobile crisis team and a receiving and stabilization facility.

yourfhc.org/crisis



Zoe Frantz says a few words before the ribbon cutting of the Green Door Center opening



RISE (formerly REL) Committee

Based on member feedback — and to stay aligned with current DOJ requirements and recommendations — Dr. Gina Forrest, Committee Chairperson, reimagined the REL Committee as:

RISE – Resilience, Inspiration, Support & Empowerment

Mission Statement:

- The RISE Committee exists to uplift and support professionals from historically underrepresented communities—especially Black and Brown colleagues—by creating opportunities for mentorship, leadership development, and authentic connection. We welcome all allies and partners to join us in creating an environment where every voice is valued and equity in mental health leadership can thrive.

Objectives:

- Provide a safe and supportive space for professionals from underrepresented groups to check in, share, and connect across organizations — while welcoming allies who are committed to advancing equity.
- Promote professional growth and leadership development through shared resources, mentorship, and storytelling.
- Foster fairness and representation in mental health leadership by amplifying lived experiences and actionable insights.
- Build solidarity and a statewide community among the 24 Community Mental Health Centers to strengthen inclusive practices and outcomes.

Connect Hub presentations will continue- the next

dates -3rd Thursday in March 2026, June 2026, and August 2026 – please watch for Outlook invitation placeholders.

RISE committee contacts:

gina.forrest@aspireindiana.org

nhenry@indianacouncil.org

Data Analytics

Led by Chair Ron Guidotti, Jr. from Porter-Starke, this committee continues working with DMHA to gain direction and further clarity on all data reporting requirements. Wendy Harrold, DMHA, regularly attends the meetings. Recently, the new method of submitting data via Qualtrics survey for the annual County Reports were shared; the submission due date is 11/26/2025. Conversations with DMHA about CCBHC data quality measures are ongoing.

Ron attended the Indiana Council Board meeting during the Fall Quarterly Conference in October to report on the committee's activities over the last year. He highlighted sharing conventions of data governance plans, DMHA reporting issues, challenges, and successes, as well as discussions and presentations of the proposed population health tool.

Contacts

rguidotti@porterstarke.org

nhenry@indianacouncil.org

Quality Improvement Committee

Dr. Michelle Baker resigned from Aspire in October and, accordingly, from this committee's co-chair role as well. We appreciate her dedication to the QI committee and wish her all the best in her new endeavors!

Emily Neufeld, Oaklawn, continues to lead as Chairperson with **Meghan Creech from Hamilton Center** stepping up as Deputy Chair now to lend support as needed. The committee convenes monthly and has four main areas of focus to enhance quality improvement efforts across our system: 1.) sharing of expertise and resources, 2.) monitoring changes in Indiana Administrative Code (IAC) regulations, 3.) discussing conferences, trainings, resources, and education, and 4.) sharing recent audit/survey experiences. Emerging areas of focus are on the DMHA portal for the application process which has been particularly burdensome as well as on lack of clarity on incident reporting. Committee members are tracking examples issues to provide to DMHA for suggested improvements and to request clarification.

QI committee contacts:

emily.neufeld@oaklawn.org
mcreech@hamiltoncenter.org
nhenry@indianacouncil.org

Grant Updates with Nancy Henry, Interim Grants Manager.

- **Nancy Henry** continues to serve as Interim Grants Manager while we seek to fill the position.
- **The Group Home Grant projects** continue. As a reminder, this project's end date is June 30, 2026. Grantees are encouraged to submit all claims as soon as possible to assess the potential reallocation of previously allocated but unused funds.
- **The Q2 CCBHC Bridge Grant funds** are to be disbursed in November (correction from last newsletter). For the 16 non-demonstration sites, the Q3 claim will be processed in November reflecting the newly allocated amounts. The end date for the Bridge Grant is June 30, 2026.
- Indiana Council continues to receive enrollment forms for the **Humana Grant/ Boston University Grant** - Behavioral Health in Aging Certificate for CMHC Staff. Please contact Denise Wade for information on this grant.



2025 FALL CONFERENCE

Thank you Members and Partners!

Thank you to our members and partners for making this year's Fall Conference a tremendous success. Your participation, collaboration, and commitment to strengthening community mental health brought meaningful conversations, fresh insights, and renewed momentum to our shared work.

We're grateful for your continued partnership and for the impactful contributions you bring to this community.

We look forward to building on this success together in the year ahead. **We will see you February 17th for our Legislative Day - see page 24!**

1 & 2 - Secretary Mitch Roob & Zoe Frantz at Indiana Council's Fall Conference.

Thank you to Secretary Roob for taking the time out of his busy schedule to speak to our members.



3 - Indiana Council staff wearing our new Indiana Council merch! (Designed by the wonderful Sydney Moulton!)

4 - Zoe Frantz, Suzanne Koesel & Rob Backmeyer stop for a quick picture

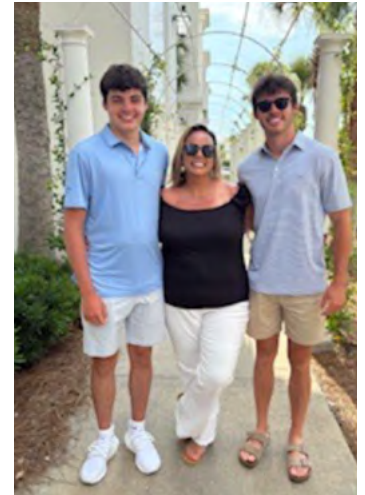


Our Grateful Moments



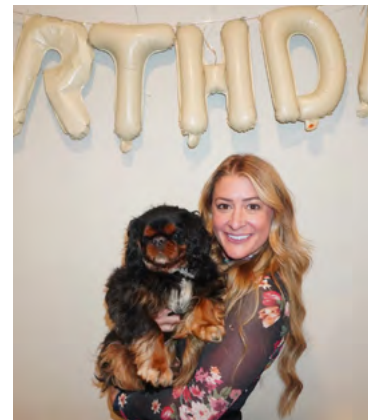
ZOE I am deeply grateful for my health, my family, our dedicated staff and board, our resilient members, and the legislators and partners who walk beside us. You are the heart of this work. "Gratitude grounds us, resilience moves us forward, and laughter keeps us lifted."

LEE ANN This year, and every year I am GRATEFUL for the two in this picture! They continue to hold me up like they have done for the past 15 years. They never knew how strong they had to be at such a little ages, but they have grown into such strong, resilient, brilliant, young men (yes I am a little biased!). I am grateful Jack has had a great first semester at IU (Hoo Hoo Hoo HOOSIERS!), and Coop continues to excel in his soccer, football, basketball and golf seasons. Always keeping their mama busy, which I love. I know this will all come to an end soon so I soak it all up while I can. I am grateful to be able to work for an amazing organization that allows me to advocate for my passion in real time! Looking forward to another great year in 2026!



NANCY I feel quite fortunate to say that 2025 has been filled with good health, great family & friends, fun travel, and unexpectedly fabulous football. I am also very grateful for this opportunity to work alongside those whose life work is so meaningful and purpose-driven, hence very inspiring to me. Happy Thanksgiving and holiday season to one and all!!!

DENISE Grateful is an understatement this holiday season. 2025 has been the best year of my life! I'm blessed beyond measure to be surrounded by my amazing family and friends that have supported me in all my travels across the country while checking multiple things off my bucket list. Falcon and I are still loving our home in the bluegrass state and we look forward to seeing everyone in 2026!



SYDNEY I'm very grateful for friendships that span over decades and life changes. Especially as life throws more things your way, friends are the family you choose. Time with them can be more healing than you thought possible. Also grateful for the ability to travel. It is so amazing to be able to experience different cultures, food and ways of life and ultimately what connects us all as human beings.



Cup of Joe with Zoe

Half hour State leader meet and greet with our members and partners. Second Tuesday of every month at 8:30am EST via Zoom.

>> [Click here for Zoom link](#)

Meeting ID: 210-953-5684

Password: ICCMHC



DID YOU KNOW? -

You can watch past Cup of Joe meetings on YouTube -

[Click here to subscribe!](#)

Last 2025 date

December
9

UPCOMING EVENTS

State Hill Day Join us for our State Hill Day
Tuesday, February 17, 2026 **Registration is now open!**

For further information
on events please contact

LeeAnn Jordan



INDIANA COUNCIL
of Community Mental Health Centers, Inc.

2026 LEGISLATIVE DAY

FEBRUARY
17
2026

MORNING SESSION
HYATT REGENCY - DOWNTOWN
INDIANAPOLIS
LUNCH WILL BE SERVED FOLLOWING AT THE
STATEHOUSE - 3RD FLOOR SOUTH ATRIUM

MONDAY
9:00AM


Scan here to register

Scan here to donate to our PAC

Together building the health and wellbeing of all Hoosiers

Register
before
February 17th
and get a free
t-shirt

**Click
here to
visit our
event
pages**



Why pay more
when you can
save?

Save with the National Council Group Purchasing Program

As a National Council for Mental Wellbeing member, you have exclusive access to our **Group Purchasing Program (GPP)** — a proven, hassle-free way to cut costs.

With this new member benefit, you can enjoy significant savings without the stress of upfront fees, obligations or long-term commitments.

You'll get 10%-30% off the **products and services** you already buy, thanks to our Pandion-powered GPP. You can unlock discounts on essentials like:

- Food service products and supplies
- Medical and surgical items
- Office supplies, furniture and technology
- Facility management and maintenance
- Rehab therapy products and services

NATIONAL COUNCIL
for Mental Wellbeing

Our program boasts an \$83 billion purchasing portfolio from over 1,460 suppliers. This means bulk purchasing power, predictable pricing and top-quality products.

Get started today and let our GPP help your organization save money, reduce stress and focus on what matters most — your mission.

POWERED BY

Pandion
OPTIMIZATION ALLIANCE

Our Providers - Serving all 92 Indiana Counties

Indiana Council of Community Mental Health Centers, Inc.

P.O. Box 875, Carmel, IN 46082 (317) 684-3684 indianacouncil.org

• Numbers show head office locations. • Click provider logos to visit their sites

- 

1 Adult & Child
603 E. Washington St. – 9th Floor,
Indianapolis IN 46204
Designated in: [MARION, JOHNSON](#)
- 

2 Aspire Indiana Health, Inc.
9615 E. 148th St., Noblesville, IN 46060
Designated in: [BOONE, HAMILTON, MADISON, MARION](#)
Also serving: [GRANT](#)
- 

3 Bowen Health
2621 E Jefferson St, Warsaw, IN 46580
Designated in: [HUNTINGTON, KOSCIUSKO, MARSHALL, WABASH, WHITLEY](#) Also serving: [ALLEN, DEKALB, , LAGRANGE, NOBLE, STEUBEN](#)
- 

4 Centerstone of Indiana, Inc.
645 S. Rogers Street, Bloomington, IN 47403
Designated in: [BARTHOLOMEW, BROWN, DECATUR, FAYETTE, JACKSON, JEFFERSON, JENNINGS, LAWRENCE, MONROE, MORGAN, OWEN, RANDOLPH, RUSH, UNION, WAYNE](#)
Also serving: [CLARK, DELAWARE, HENRY, JOHNSON, MARION, PUTNAM, SCOTT](#)
- 

5 Community Fairbanks Behavioral Health
8180 Clearvista Pkwy, Indianapolis, IN 46256
Designated in: [MARION, HANCOCK, SHELBY](#)
Also serving: [MADISON, JOHNSON](#)
- 

6 Community Fairbanks Behavioral Health – Howard
322 N. Main St, Kokomo, IN 46901
Designated in: [CLINTON, HOWARD, TIPTON](#)
- 

7 Cummins Behavioral Health Systems, Inc.
6655 East US 36, Avon IN 46123
Designated in: [HENDRICKS, PUTNAM](#)
Also serving: [BOONE, MONTGOMERY, MARION](#)
- 

8 Edgewater Systems for Balanced Living, Inc.
1100 West Sixth Avenue, Gary IN 46402
Designated in: [LAKE](#) Also serving: [PORTER, LAPORTE](#)
- 

9 Family Health Center
515 Bayou Street, Vincennes IN 47591
Designated in: [DAVISS, KNOX, MARTIN, PIKE](#)
- 

10 4C Health
401 E. 8th Street, Rochester, IN 46975
Designated in: [CASS, FULTON, MIAMI, PULASKI](#)
Also serving: [CARROLL, CLINTON, GRANT, MARSHALL, TIPPECANOE, WABASH HOWARD, TIPTON, WHITE](#)
- 

11 Hamilton Center, Inc.
620 Eighth Avenue, Terre Haute IN 47804
Designated in: [CLAY, GREENE, PARKE, SULLIVAN, VERMILLION, VIGO](#)
Also serving: [HENDRICKS, MARION, OWEN, PUTNAM](#)
- 

12 INcompass Healthcare
285 Bielby Road, Lawrenceburg IN 47025
Designated in: [DEARBORN, FRANKLIN, OHIO, RIPLEY, SWITZERLAND](#) Also serving: [DECATUR, FAYETTE, HENRY, JEFFERSON, JENNINGS, RUSH, SCOTT, UNION, WAYNE](#)
- 

13 LifeSpring Health Systems
460 Spring Street, Jeffersonville IN 47130
Designated in: [CLARK, CRAWFORD, DUBOIS, FLOYD, HARRISON, JEFFERSON, ORANGE, PERRY, SCOTT, SPENCER, WASHINGTON](#)
- 

14 Meridian Health Services
240 N. Tillotson Avenue, Muncie IN 47304
Designated in: [DELAWARE, HENRY, JAY](#)
Also serving: [ALLEN, FAYETTE, HOWARD, LAPORTE, MADISON, MARION, RANDOLPH, RUSH, ST. JOSEPH, TIPPECANOE, WAYNE](#)
- 

15 Northeastern Center, Inc.
220 South Main Street, Kendallville IN 46755
Designated in: [DEKALB, LAGRANGE, NOBLE, STEUBEN](#)
- 

16 Oaklawn Psychiatric Center, Inc.
330 Lakeview Drive, Goshen IN 46527
Designated in: [ELKHART, ST. JOSEPH](#)
- 

17 Park Center
909 East State Boulevard, Fort Wayne IN 46805
Designated in: [ADAMS, ALLEN, WELLS](#)
Also serving: [HUNTINGTON, WHITLEY](#)
- 

18 Porter-Starke Services
601 Wall Street, Valparaiso IN 46383
Designated in: [PORTER & STARKE](#)
- 

19 Radiant Health
505 N. Wabash Avenue, Marion IN 46952
Designated in: [GRANT, BLACKFORD](#)
- 

20 Regional Health Systems
8555 Taft Street, Merrillville, IN 46410
Designated in: [LAKE](#)
- 

21 Sandra Eskenazi Mental Health Center
720 Eskenazi Avenue, Indianapolis IN 46202
Designated in: [MARION](#)
- 

22 Southwestern Behavioral Healthcare, Inc.
415 Mulberry Street, Evansville IN 47713
Designated in: [GIBSON, POSEY, VANDERBURGH, WARRICK](#)
- 

23 Swanson Center
7224 W. 400 N., Michigan City IN 46360
Designated in: [LAPORTE](#)
- 

24 Valley Oaks
415 N. 26th Street, Lafayette, IN 47904
Designated in: [BENTON, CARROLL, FOUNTAIN, JASPER, MONTGOMERY, NEWTON, TIPPECANOE, WARREN, WHITE](#)
- CCBHC DEMO indicates provider is a designated CCBHC demonstration site in the counties shown

[>> Click here to view provider details on our site](#)

